



JAMES
ANDERSON

North Worple Way
Mortlake SW14





JAMES
ANDERSON

North Worple Way Mortlake SW14

Nestled in the charming area of Mortlake, this delightful two-bedroom flat on North Worple Way offers a perfect blend of modern comfort and serene living. Recently refurbished, the property boasts new carpets throughout, a contemporary kitchen, and a fresh coat of paint, ensuring a bright and inviting atmosphere.

The flat features a spacious reception room, ideal for relaxation or entertaining guests. The two well-proportioned bedrooms provide ample space for rest and personalisation, making it a perfect home for individuals or small families. The bathroom is conveniently located, adding to the practicality of the layout.

One of the standout features of this property is the private garden, a rare find in London. This outdoor space offers a tranquil retreat, perfect for enjoying sunny days or hosting gatherings with friends and family.

Situated in a desirable location, the flat benefits from excellent transport links and local amenities, making it easy to explore the vibrant offerings of London. Whether you are looking for a peaceful home or a convenient base to enjoy city life, this flat on North Worple Way is an opportunity not to be missed.



Two Double Bedrooms



Modern Bathroom



12 Month Minimum | £484.62 Holding Deposit



Brand New Kitchen



EPC C | Council Tax D | Deposit £2,423.07



Mortlake Station



Thompson House School



Private Garden

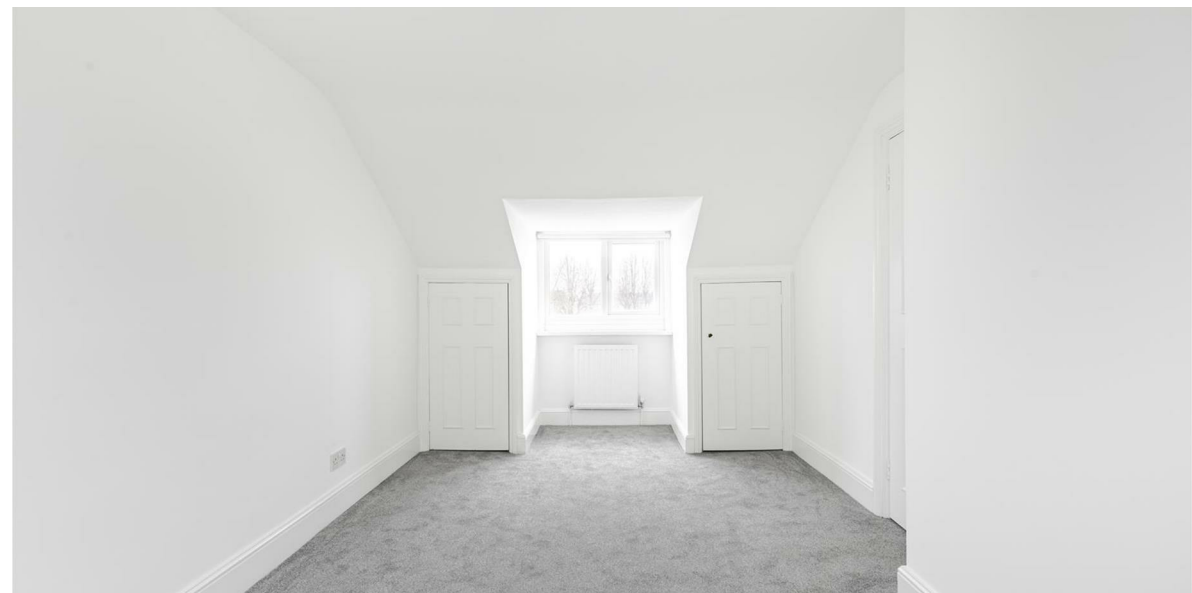


Brand New Carpets















65 Barnes High Street
Barnes
SW13 9LD

0208 878 8688
barnes2@jamesanderson.co.uk
www.jamesanderson.co.uk

