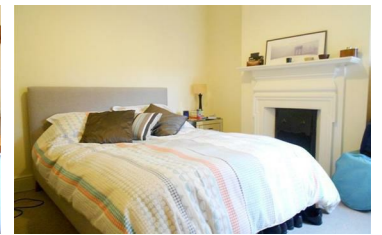




**JAMES  
ANDERSON**



## TO LET

Ashleigh Road, Mortlake, SW14

## £1,800 Per Month

Per Month

Presented to the market is a spacious two bedroom first floor maisonette in the desirable Mortlake area. The property comprises of a large kitchen/ diner with access out to the private rear garden and a separate lounge with period features. There are two bedrooms and a generous family bathroom. Ashleigh road is conveniently located for Mortlake and Barnes bridge stations as well as the independent shops and restaurants on White hart lane.



Two Double bedrooms



Family Bathroom



Spacious Reception



Eat in Kitchen



EPC E / Council Tax D / Deposit £2,076.92



Mortlake Station



St Mary Magdalene School



White Hart Lane



Private Garden



12 Month Minimum Tenancy / Holding Deposit £415.38



OPEN 7 DAYS A WEEK • Weekdays until 9pm • Weekends until 5pm

0208 878 8688

