



**JAMES
ANDERSON**



FOR SALE

Danebury Avenue, Putney, SW15

£275,000

Guide Price

A no chain, one bedroom ground floor purpose-built apartment located in the desirable Danebury Avenue, Putney. This well-maintained property features a spacious double bedroom with ample storage, a bright and airy living room, and a fitted kitchen. The apartment offers direct access to a private garden, ideal for outdoor relaxation or entertaining.

Located in a sought after area, it is within easy reach of local amenities, transport links, and green spaces, especially Richmond Park making it an ideal first-time purchase or investment opportunity while also providing an allocated parking space.

Danebury Avenue offers a variety of benefits that make it a highly desirable location. The area boasts excellent transport links, with Putney Station providing quick access to Waterloo in under 20 minutes and the District Line at East Putney Underground Station nearby, making commuting easy. Residents can also enjoy the proximity to beautiful green spaces, including Richmond Park, Putney Heath, Wimbledon Common, and the Thames Path,



One Double Bedroom



Bathroom Suite



Spacious Lounge With Direct Garden Access



Fitted Kitchen



EPC Rating -



Easy Access To Transport



Close To Roehampton University



Quiet & Peaceful Location



Moments From Green Open Spaces & Richmond Park

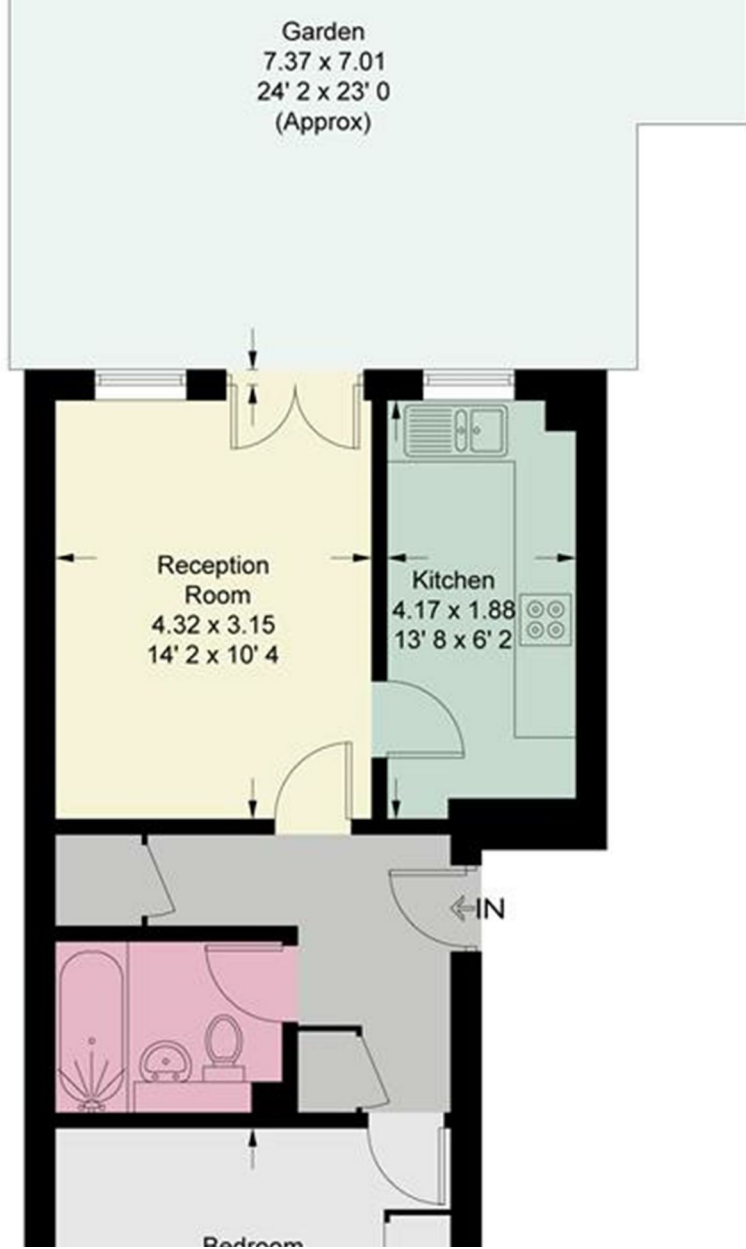


Chain Free



OPEN 7 DAYS A WEEK • Weekdays until 9pm • Weekends until 5pm

020 8788 6611



Energy Efficiency Rating		
	Current	Potential
<i>Very energy efficient - lower running costs</i>		
(92 plus) A		
(81-91) B		
(69-80) C		
(55-68) D		
(39-54) E		
(21-38) F		
(1-20) G		
<i>Not energy efficient - higher running costs</i>		
England & Wales	EU Directive 2002/91/EC	

Environmental Impact (CO ₂) Rating		
	Current	Potential
<i>Very environmentally friendly - lower CO₂ emissions</i>		
(92 plus) A		
(81-91) B		
(69-80) C		
(55-68) D		
(39-54) E		
(21-38) F		
(1-20) G		
<i>Not environmentally friendly - higher CO₂ emissions</i>		
England & Wales	EU Directive 2002/91/EC	

