



**JAMES  
ANDERSON**



## **TO LET**

Palmerston Road, East Sheen, SW14

## **£4,700 Per Month**

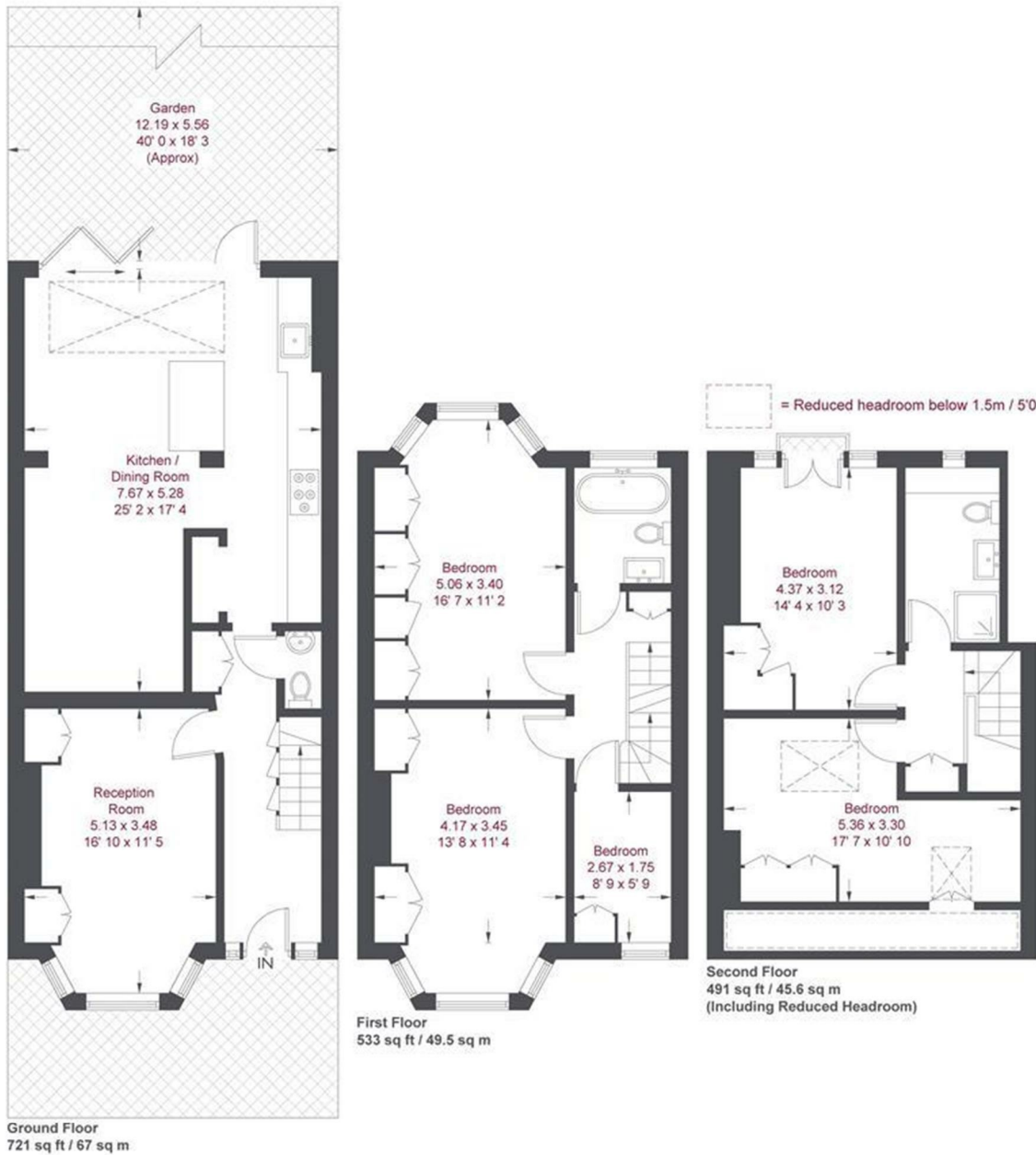
Per Month

Palmerston Road is a highly desirable road, conveniently located for the outstanding Sheen Mount Primary School, Richmond Park, Sheen Common and the extensive shopping, leisure and transport amenities of East Sheen. The ground floor of this stunning property offers a spacious entrance hall which leads to a living room, sizeable open plan kitchen/dining room with bi-folding doors opening out onto an easy-to-maintain private garden and a downstairs w/c. The first floor provides two large double bedrooms, a modern family bathroom and a single bedroom/study. There are two further bedrooms with built-in wardrobes situated on the top floor alongside a second shower room/utility area and eaves storage.



OPEN 7 DAYS A WEEK • Weekdays until 9pm • Weekends until 5pm

0208 876 6611



Not to scale, for guidance only and must not be relied upon as a statement of fact  
All measurements and areas are approximate only and have been prepared in accordance with the current edition of the RICS Code of Measuring Practice

Energy Efficiency Rating		
	Current	Potential
Very energy efficient - lower running costs		
(92 plus) <b>A</b>		
(81-91) <b>B</b>		
(69-80) <b>C</b>		
(55-68) <b>D</b>		
(39-54) <b>E</b>		
(21-38) <b>F</b>		
(1-20) <b>G</b>		
Not energy efficient - higher running costs		
<b>England &amp; Wales</b>	EU Directive 2002/91/EC	

Environmental Impact (CO <sub>2</sub> ) Rating		
	Current	Potential
Very environmentally friendly - lower CO <sub>2</sub> emissions		
(92 plus) <b>A</b>		
(81-91) <b>B</b>		
(69-80) <b>C</b>		
(55-68) <b>D</b>		
(39-54) <b>E</b>		
(21-38) <b>F</b>		
(1-20) <b>G</b>		
Not environmentally friendly - higher CO <sub>2</sub> emissions		
<b>England &amp; Wales</b>	EU Directive 2002/91/EC	

