



**JAMES
ANDERSON**

Pleasance Road
Putney SW15
Offers In Excess Of £470,000



Pleasance Road Putney SW15

Nestled within the prestigious Grade II Listed gated development of Putney Park House, this apartment seamlessly blends period charm with contemporary style, all while boasting picturesque views of the beautifully manicured grounds. Situated on the top floor, access is through the impressive entrance with a sweeping staircase. Upon entering, you'll find a spacious open-plan living/dining area flooded with natural light, perfect for both relaxation and entertaining. The apartment also features a separate kitchen with modern fittings, a sleek shower room, and a generously sized double bedroom with built-in wardrobes. Additionally, it offers exceptional storage space within the eaves.

Putney Park House, located on Pleasance Road in the Dover House conservation area of Putney, London SW15, is a Grade II listed building with a rich history. Originally a mid-Georgian house, it underwent significant expansion between 1837 and 1838 under the design of architect Decimus Burton for Robert Hutton. The original structure features a five-bay, two-storey north front with a slightly projecting central door, constructed of brick and painted with gauged, flat arches. The substantial stuccoed additions from the 19th century are in a stripped Greek Revival style.

The property is set within established communal grounds, offering residents a tranquil environment. It boasts convenient access to local amenities, with Barnes mainline station approximately 0.7 miles away, and both Putney High Street and East Putney Underground station nearby. The area is well-served by bus routes to Central London and the City, and offers easy access to the M25, Heathrow, and Gatwick Airports.

Tenure - Share Of Freehold (Lease 999 Years From 2018)

Service Charge - £2000 P/A

Ground Rent - £0

EPC Rating - C

Council Tax Band - E

















SUNFLOWER

The Cheeky Panda
SILKY SOFT
BAMBOO
TOILET TISSUE
MADE FROM 100% RESPONSIBLE BAMBOO
SANFONNECHES
PAPIER TOILETTE
TOILETTPAPIER
lyPanda.com
9 SUPPLY
100 SHEETS



JAMES
ANDERSON


Putney Park House

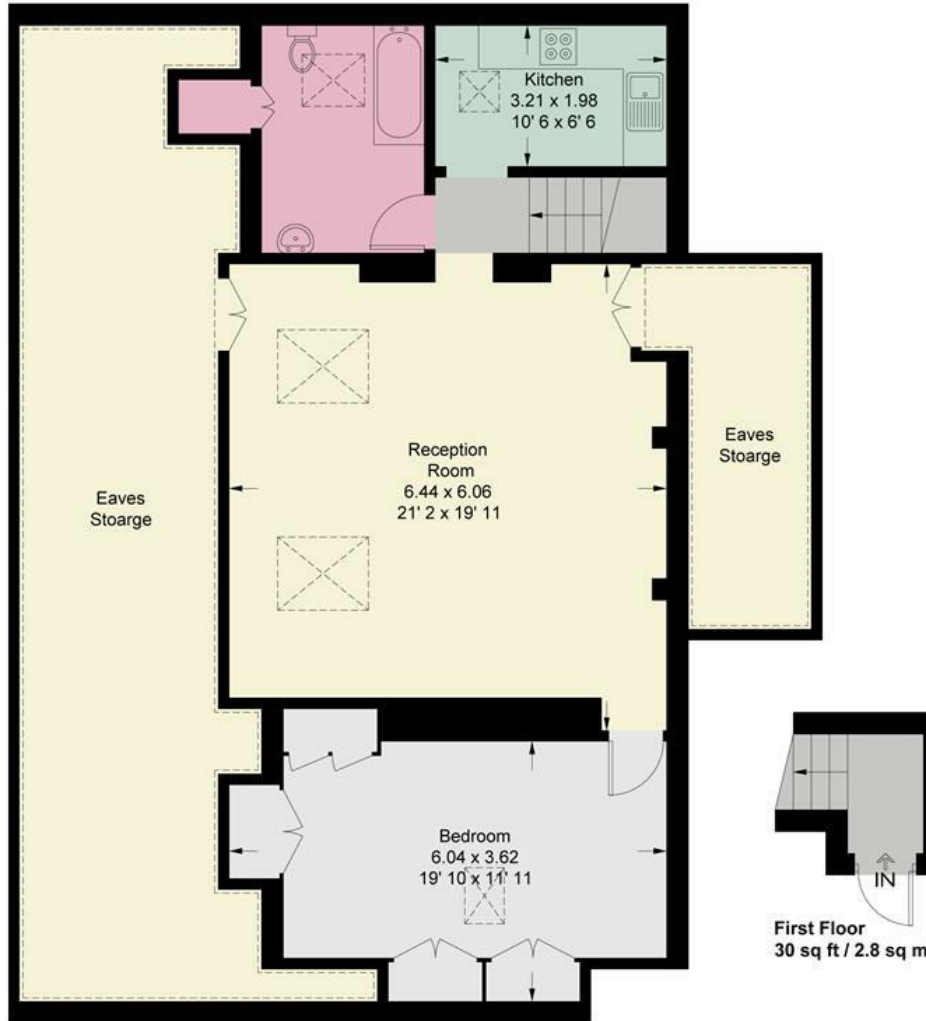
Approximate Gross Internal Area = 1431 sq ft / 133 sq m
(Including Reduced Headroom / Eaves Storage)

Reduced Headroom / Eaves Storage = 493 sq ft / 45.8 sq m



JAMES
ANDERSON

 = Reduced headroom below 1.5m / 5'0



Second Floor
1401 sq ft / 130.2 sq m
(Including Reduced Headroom / Eaves Storage)

This plan is not to scale and must be used as layout guidance only. All measurements and areas are approximate and should not be relied upon to provide accurate information. This plan must not be relied upon when making property valuations, design considerations or any other such relevant decisions. We accept no responsibility or liability (whether in contract, tort or otherwise) in relation to any loss whatsoever arising from or in connection with any use of this plan or the adequacy, accuracy or completeness of it or any information within it.



78 Lower Richmond Road
Putney
SW15 1LL

020 8788 6611
sales@japutney.co.uk
www.jamesanderson.co.uk

