



JAMES  
ANDERSON



## TO LET

Riverview Gardens, London, SW13

**£2,950 Per Calendar**

Per Calendar Month

A spacious and well presented two bedroom ground floor apartment located in the prestigious Riverview Gardens in Barnes. Set in close proximity to the River Thames, Hammersmith Tube Station, and the vibrant amenities of Castelnau. The blend of convenience, tranquility, size (978 sq ft) and layout make it perfect for those seeking both comfort and practicality in a sought after location.



Two Double Bedrooms



Fitted Bathroom



Spacious Reception Room



Modern Kitchen



EPC C / Council Tax E / Deposit £3,403.84



Hammersmith Tube



Outstanding Local Schools



River Thames



Ground Floor Apartment

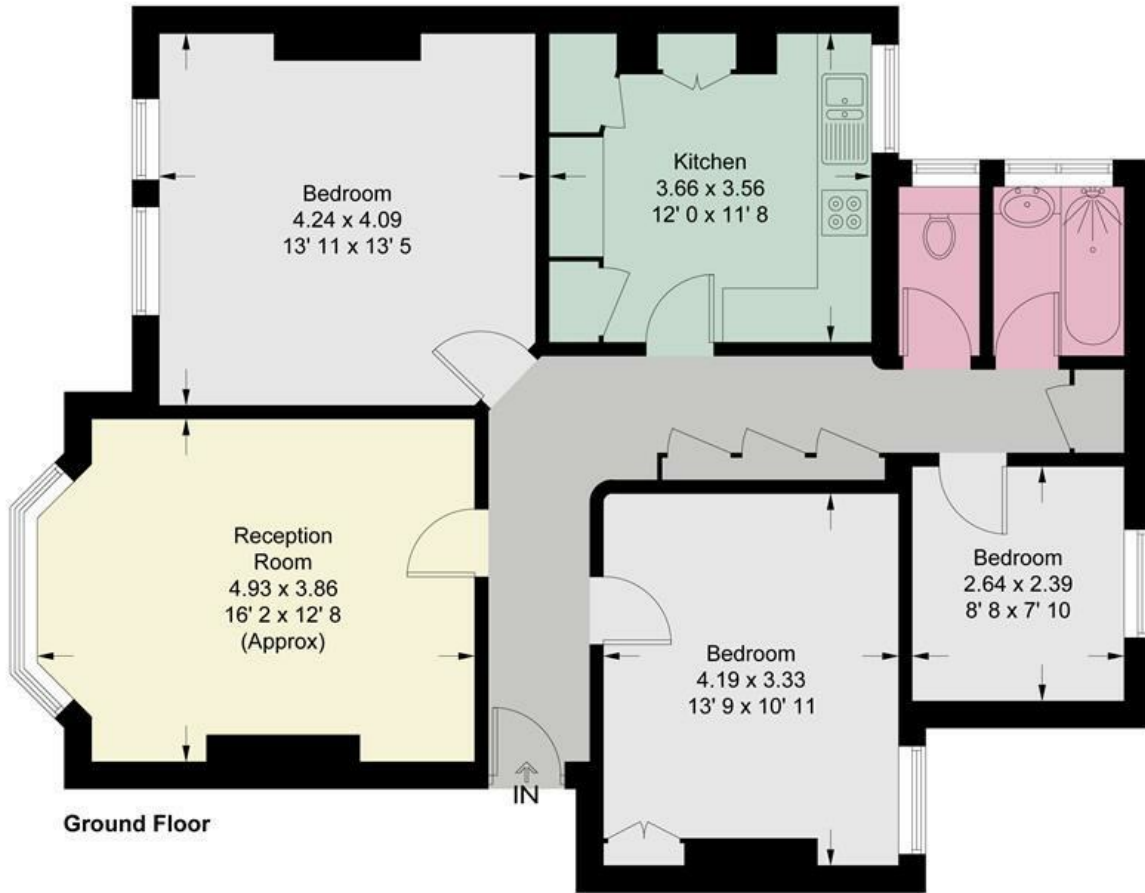


12 Month Minimum Term / £680.76 Minimum Term



OPEN 7 DAYS A WEEK • Weekdays until 9pm • Weekends until 5pm

**0208 878 8688**



This plan is not to scale and must be used as layout guidance only. All measurements and areas are approximate and should not be relied upon to provide accurate information. This plan must not be relied upon when making property valuations, design considerations or any other such relevant decisions. We accept no responsibility or liability (whether in contract, tort or otherwise) in relation to any loss whatsoever arising from or in connection with any use of this plan or the adequacy, accuracy or completeness of it or any information within it.



Energy Efficiency Rating		
	Current	Potential
Very energy efficient - lower running costs		
(92 plus) <b>A</b>		
(81-91) <b>B</b>		
(69-80) <b>C</b>		
(55-68) <b>D</b>		
(39-54) <b>E</b>		
(21-38) <b>F</b>		
(1-20) <b>G</b>		
Not energy efficient - higher running costs		
	70	80
<b>England &amp; Wales</b>	EU Directive 2002/91/EC	

Environmental Impact (CO <sub>2</sub> ) Rating		
	Current	Potential
Very environmentally friendly - lower CO <sub>2</sub> emissions		
(92 plus) <b>A</b>		
(81-91) <b>B</b>		
(69-80) <b>C</b>		
(55-68) <b>D</b>		
(39-54) <b>E</b>		
(21-38) <b>F</b>		
(1-20) <b>G</b>		
Not environmentally friendly - higher CO <sub>2</sub> emissions		
<b>England &amp; Wales</b>	EU Directive 2002/91/EC	

