



**JAMES  
ANDERSON**

Princes Road  
London SW14  
£1,150,000





## Princes Road London SW14

A fully refurbished three bedroom house that perfectly combines high-end modern design with charm and character. Princes Road features a newly extended kitchen, courtyard garden, new double glazed sash windows, cast iron radiators, underfloor heating, high ceilings and restored features throughout. The ground floor living space comprises entrance hallway, bay fronted lounge with log burner and dining space, kitchen with French doors out to a lovely south facing garden. The upper floors host two double bedrooms, a contemporary family bathroom with freestanding bath and separate walk in shower, utility cupboard space, a second shower bathroom and an impressive principle bedroom with built in wardrobes. There is also access to ample storage in the eaves. Princes Road is conveniently located with easy access to White Hart Lane, and it's local shops and gastro pubs, restaurants and coffee shops together with bus routes giving access to neighbouring towns. Mortlake and Barnes Bridge mainline station is within walking distance and both Barnes and East Sheen town centres are easily accessible. The property is also within the catchment area of Thompson House School.

































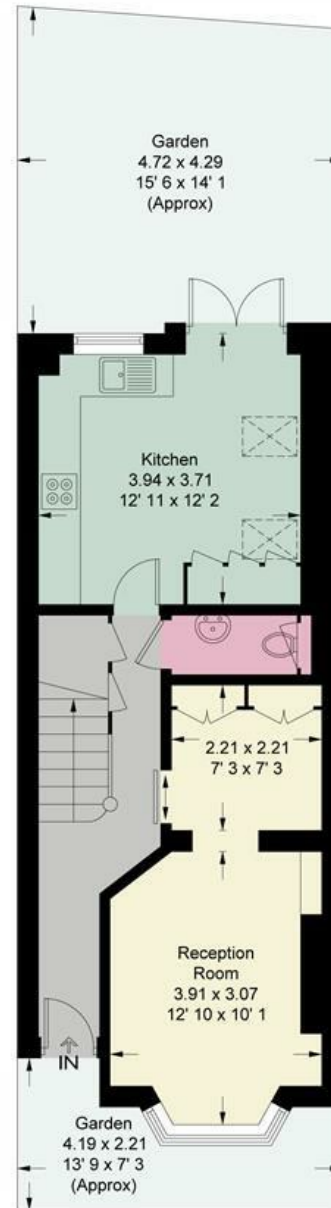


# Princes Road

Approximate Gross Internal Area = 1116 sq ft / 103.7 sq m  
(Including Reduced Headroom / Eaves)  
Reduced Headroom / Eaves = 98 sq ft / 9.1 sq m

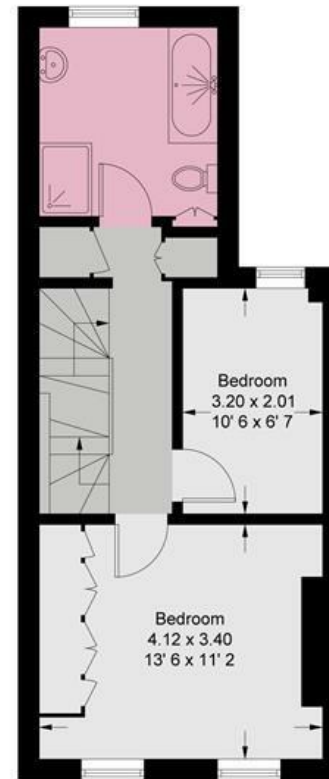


JAMES  
ANDERSON



Ground Floor  
465 sq ft / 43.2 sq m

= Reduced headroom below 1.5m / 5'0"



First Floor  
408 sq ft / 37.9 sq m



Second Floor  
243 sq ft / 22.6 sq m  
(Including Reduced Headroom / Eaves)



JAMES  
ANDERSON

This plan is not to scale and must be used as layout guidance only. All measurements and areas are approximate and should not be relied upon to provide accurate information. This plan must not be relied upon when making property valuations, design considerations or any other such relevant decisions. We accept no responsibility or liability (whether in contract, tort or otherwise) in relation to any loss whatsoever arising from or in connection with any use of this plan or the adequacy, accuracy or completeness of it or any information within it.







363 Upper Richmond Road West  
East Sheen  
SW14 7NX

020 8876 6611  
[sales@jasheen.co.uk](mailto:sales@jasheen.co.uk)  
[www.jamesanderson.co.uk](http://www.jamesanderson.co.uk)

