



**JAMES  
ANDERSON**



## TO LET

Putney Hill, London, SW15

## £2,500 Per Month

Per Month

THREE MONTH LET ONLY FROM JANUARY 8TH - Stunning one double bedroom flat to rent with private balcony and communal gardens. the flat is conveniently situated a short walk to Putney High Street, excellent transport links, shops, restaurants and with easy access to the A3 motorway.

Deposit Required £2884.61

Three month let only

Holding Deposit: £576.92



One Bedroom



Modern Bathroom



Stunning Reception



Modern Kitchen



EPC D / Council Tax Band E / Holding Deposit £576.92



Putney Train Station



Putney High



Six Month Let Only



Available January

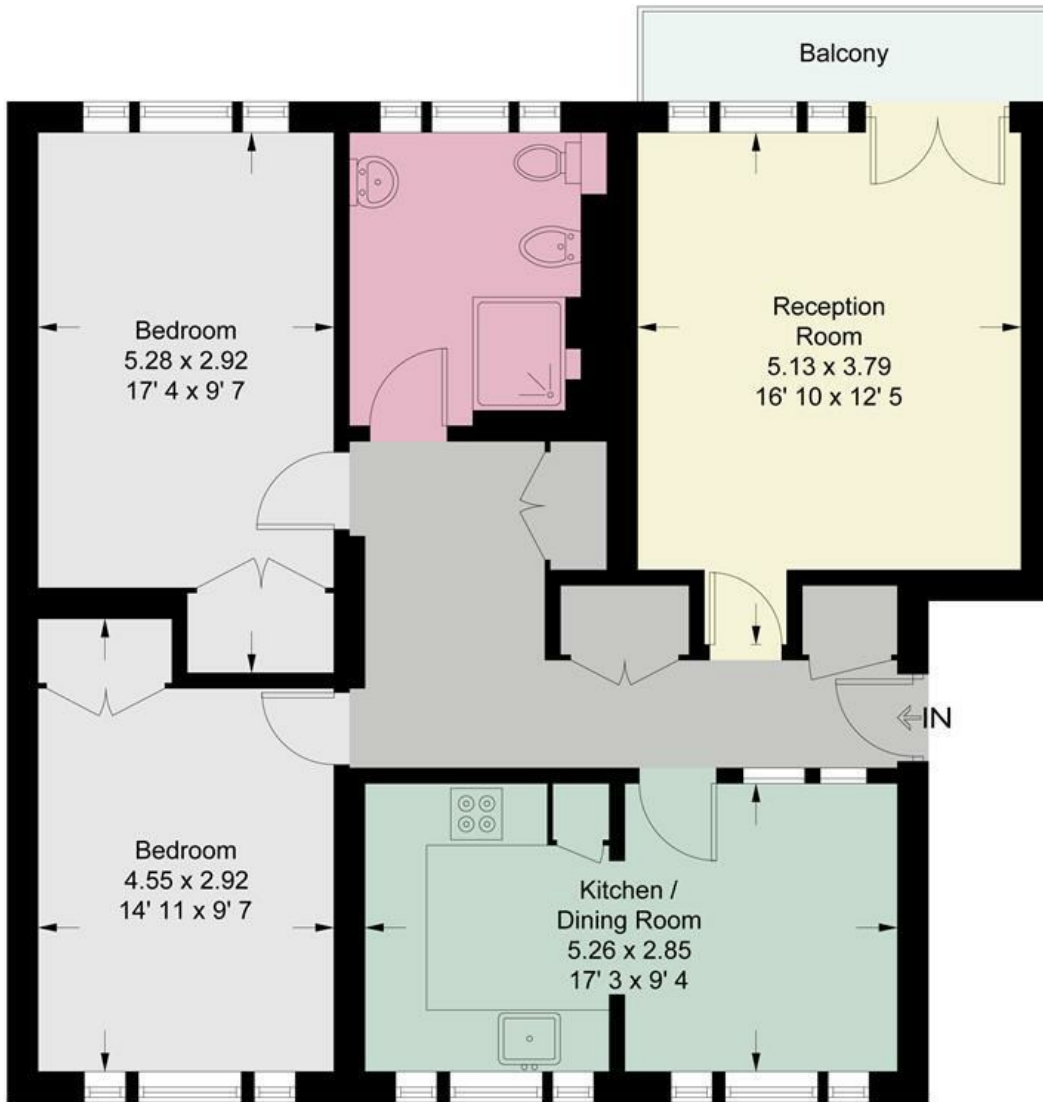


Council Tax Band E - £1066 Per Annum



OPEN 7 DAYS A WEEK • Weekdays until 9pm • Weekends until 5pm

0208 785 4400



**Third Floor**

This plan is not to scale and must be used as layout guidance only. All measurements and areas are approximate and should not be relied upon to provide accurate information. This plan must not be relied upon when making property valuations, design considerations or any other such relevant decisions. We accept no responsibility or liability (whether in contract, tort or otherwise) in relation to any loss whatsoever arising from or in connection with any use of this plan or the adequacy, accuracy or completeness of it or any information within it.



Energy Efficiency Rating		Current	Potential
Very energy efficient - lower running costs			
(92 plus) <b>A</b>			
(81-91) <b>B</b>			
(69-80) <b>C</b>			
(55-68) <b>D</b>			
(39-54) <b>E</b>			
(21-38) <b>F</b>			
(1-20) <b>G</b>			
Not energy efficient - higher running costs			
<b>England &amp; Wales</b>		EU Directive 2002/91/EC	

Environmental Impact (CO <sub>2</sub> ) Rating		Current	Potential
Very environmentally friendly - lower CO <sub>2</sub> emissions			
(92 plus) <b>A</b>			
(81-91) <b>B</b>			
(69-80) <b>C</b>			
(55-68) <b>D</b>			
(39-54) <b>E</b>			
(21-38) <b>F</b>			
(1-20) <b>G</b>			
Not environmentally friendly - higher CO <sub>2</sub> emissions			
<b>England &amp; Wales</b>		EU Directive 2002/91/EC	

