



JAMES
ANDERSON



TO LET

White Hart Lane, Barnes, SW13

£2,150 Per Month

Per Month

A beautifully presented ground-floor two-bedroom apartment on White Hart Lane. The property features a contemporary kitchen with a gas hob and ample storage, a stylish bathroom with a rainfall shower over the bath, and two spacious double bedrooms. The bright reception room and wooden flooring throughout add to its appeal. Additional benefits include plenty of internal storage, a spacious utility cupboard and a large external storage cupboard. Ideally located close to White Hart Lane's shops, restaurants, and cafes, it's a short walk to local outstanding primary schools and both Barnes Bridge and Barnes train stations.



Two Double Bedrooms



Stylish Bathroom



Modern Bathroom



Spacious Reception Room



EPC D / Council Tax D / Deposit £2480.76



Barnes Bridge Station



Outstanding Local Primary Schools



White Hart Lane



Available Furnished / Part Furnished / Unfurnished

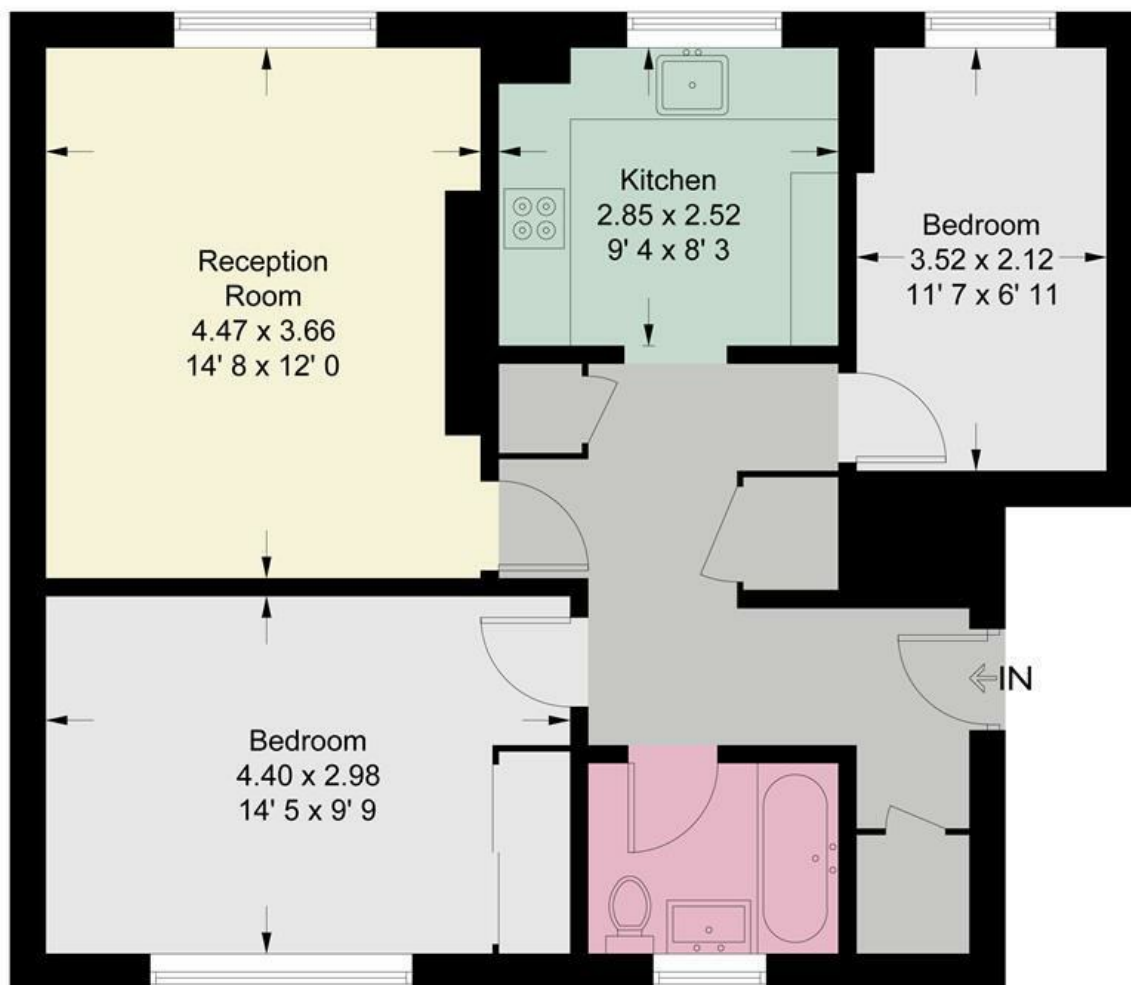


£496.15 Holding Deposit / 12 Month Minimum Term



OPEN 7 DAYS A WEEK • Weekdays until 9pm • Weekends until 5pm

0208 878 8688



Ground Floor

This plan is not to scale and must be used as layout guidance only. All measurements and areas are approximate and should not be relied upon to provide accurate information. This plan must not be relied upon when making property valuations, design considerations or any other such relevant decisions. We accept no responsibility or liability (whether in contract, tort or otherwise) in relation to any loss whatsoever arising from or in connection with any use of this plan or the adequacy, accuracy or completeness of it or any information within it.



Energy Efficiency Rating		
	Current	Potential
Very energy efficient - lower running costs		
(92 plus) A		
(81-91) B		
(69-80) C		
(55-68) D		
(39-54) E		
(21-38) F		
(1-20) G		
Not energy efficient - higher running costs		
	72	79
England & Wales	EU Directive 2002/91/EC	

Environmental Impact (CO ₂) Rating		
	Current	Potential
Very environmentally friendly - lower CO ₂ emissions		
(92 plus) A		
(81-91) B		
(69-80) C		
(55-68) D		
(39-54) E		
(21-38) F		
(1-20) G		
Not environmentally friendly - higher CO ₂ emissions		
England & Wales	EU Directive 2002/91/EC	

