



**JAMES
ANDERSON**



FOR SALE

Burke Close, London, SW15

£595,000

Guide Price

A brilliant freehold house located on the borders of Putney, Barnes and East Sheen and only a short walk to shops, bars, restaurants and transport links into the city. There are also some excellent local Schools and Richmond Park is nearby.

The property provides spacious accommodation throughout and benefits from having a private west facing garden. There is a large reception room, kitchen area and shower room with WC & wash hand basin on the ground floor while the garage has been converted to provide a multi-room function. Upstairs offers three spacious bedrooms and a family bathroom suite.

There is ample storage on both levels and extra storage space in the loft. An ideal family home or buy to let investment and with no onward chain. Given the growing popularity of this area, especially among first time buyers, a viewing is highly recommended.



Four Spacious Bedrooms



One Bathroom & One Shower Room



Sizeable Lounge Suited For Entertaining



Fitted Kitchen



EPC Rating -



Easy Access To Transport



Within Catchment For Highly Regarded Schools



Quiet & Peaceful Location



Close To Richmond Park

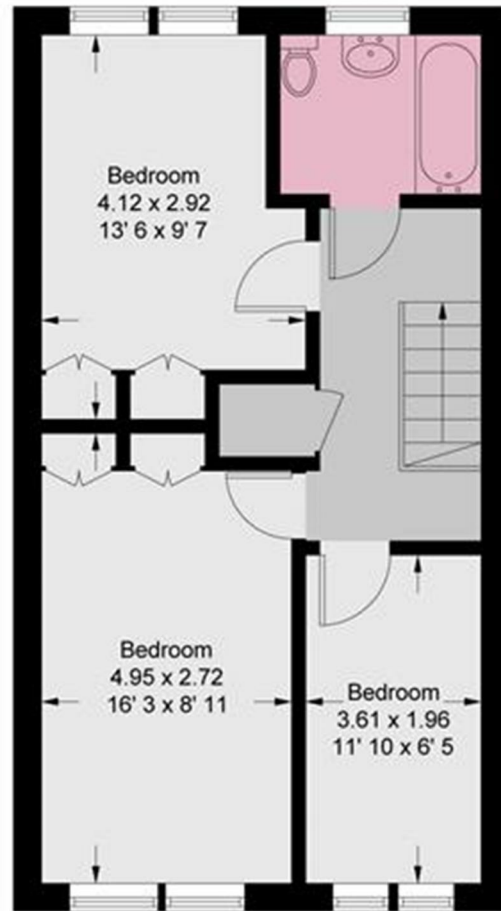
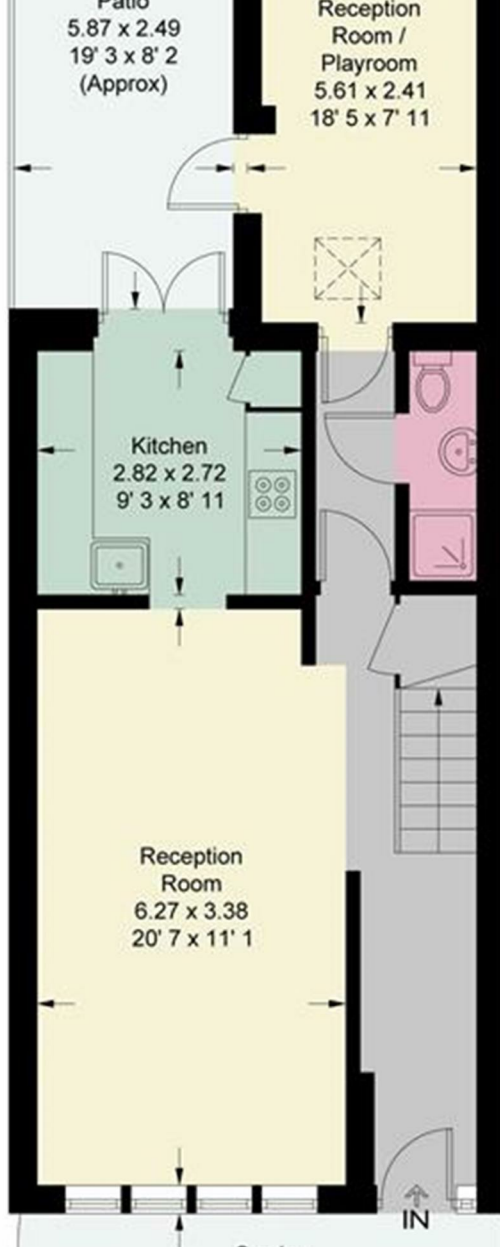


Chain Free



OPEN 7 DAYS A WEEK • Weekdays until 9pm • Weekends until 5pm

020 8788 6611



First Floor

| Energy Efficiency Rating | | |
|---|-------------------------|-----------|
| | Current | Potential |
| Very energy efficient - lower running costs | | |
| (92 plus) A | | |
| (81-91) B | | |
| (69-80) C | | |
| (55-68) D | | |
| (39-54) E | | |
| (21-38) F | | |
| (1-20) G | | |
| Not energy efficient - higher running costs | | |
| | 71 | 85 |
| England & Wales | EU Directive 2002/91/EC | |

| Environmental Impact (CO ₂) Rating | | |
|---|-------------------------|-----------|
| | Current | Potential |
| Very environmentally friendly - lower CO ₂ emissions | | |
| (92 plus) A | | |
| (81-91) B | | |
| (69-80) C | | |
| (55-68) D | | |
| (39-54) E | | |
| (21-38) F | | |
| (1-20) G | | |
| Not environmentally friendly - higher CO ₂ emissions | | |
| England & Wales | EU Directive 2002/91/EC | |

