



JAMES
ANDERSON

Castelnau Mansions
Barnes SW13















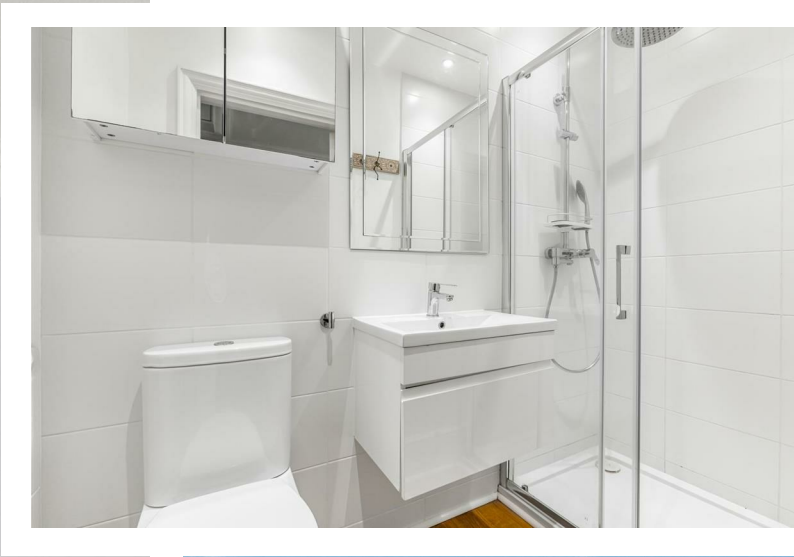
**JAMES
ANDERSON**

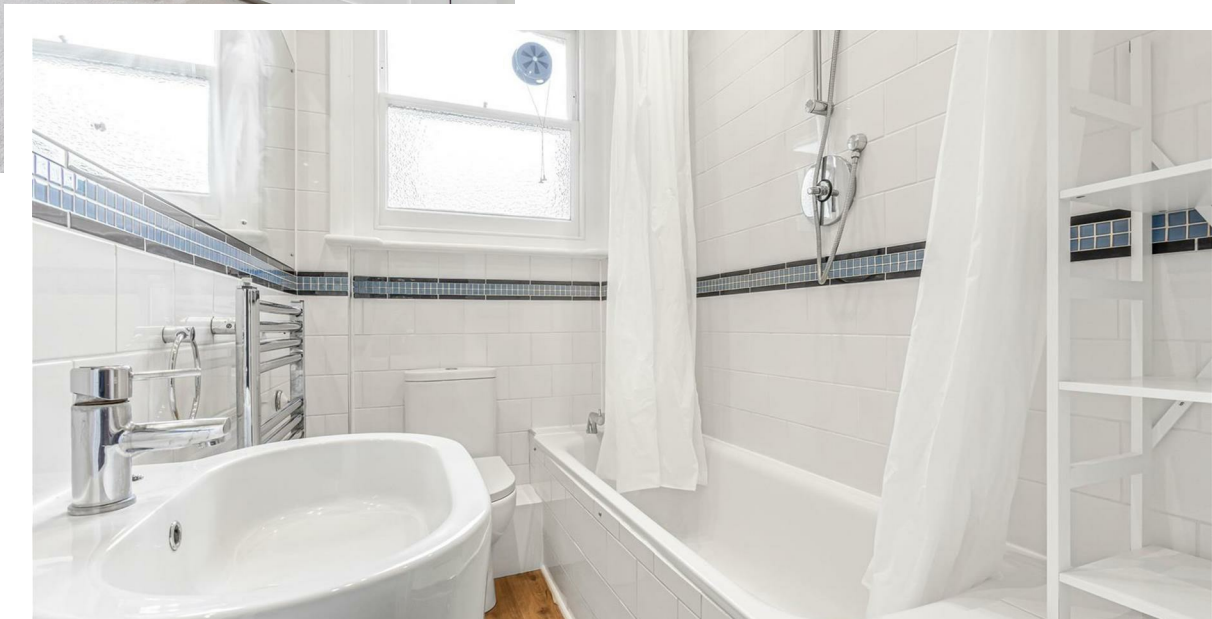
Castelnau Mansions Barnes SW13

A beautiful mansion block apartment, situated very close to the Hammersmith Bridge and the River Thames. This spacious, first floor property is very well-presented, and is tastefully decorated throughout. The accommodation is arranged to provide two double bedrooms, and a large single bedroom. There is a large elegant reception room with built-in shelving and storage, and a spacious, modern kitchen/dining room to the rear of the property. There is access from the kitchen out to attractive gardens and grounds at the rear of the building. Castelnau Mansions is conveniently placed for the amenities of Barnes and Hammersmith. For the commuter Hammersmith's underground and overground network are a short walk over the bridge. The schools in the area include St Paul's School, The Harrodian School, The Swedish School, to name a few.

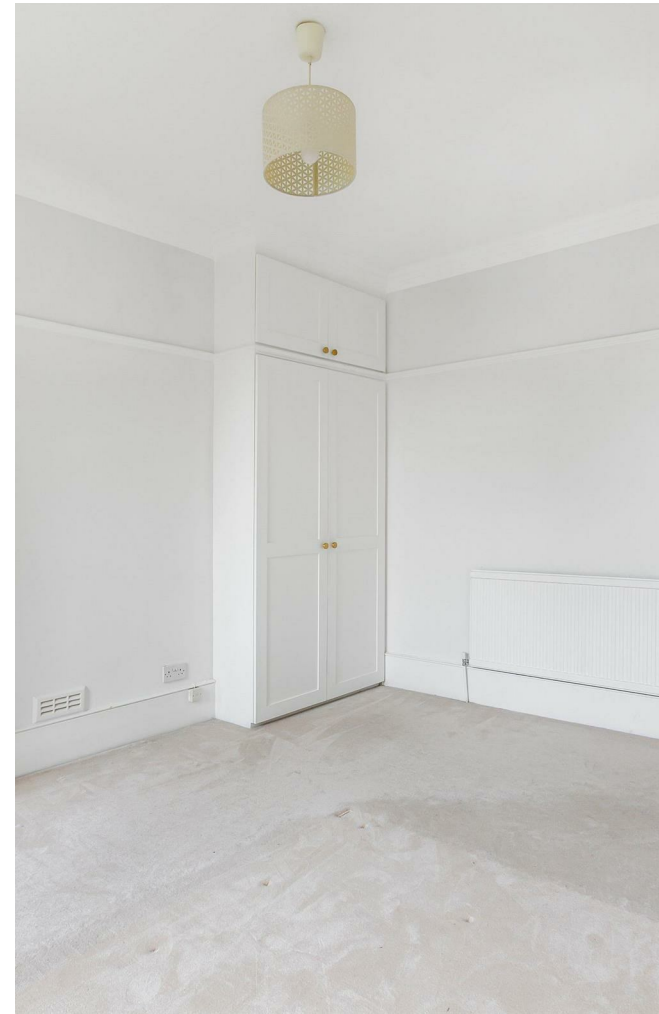
-  Three bedrooms
-  Two Bathrooms
-  Bright Reception Room
-  Spacious Kitchen/Diner
-  EPC C / Council Tax F / Deposit £4,038.46
-  Hammersmith Tube
-  St Pauls School
-  River Thames
-  Communal Gardens
-  12 Month Minimum Term / £807.69 Holding Deposit





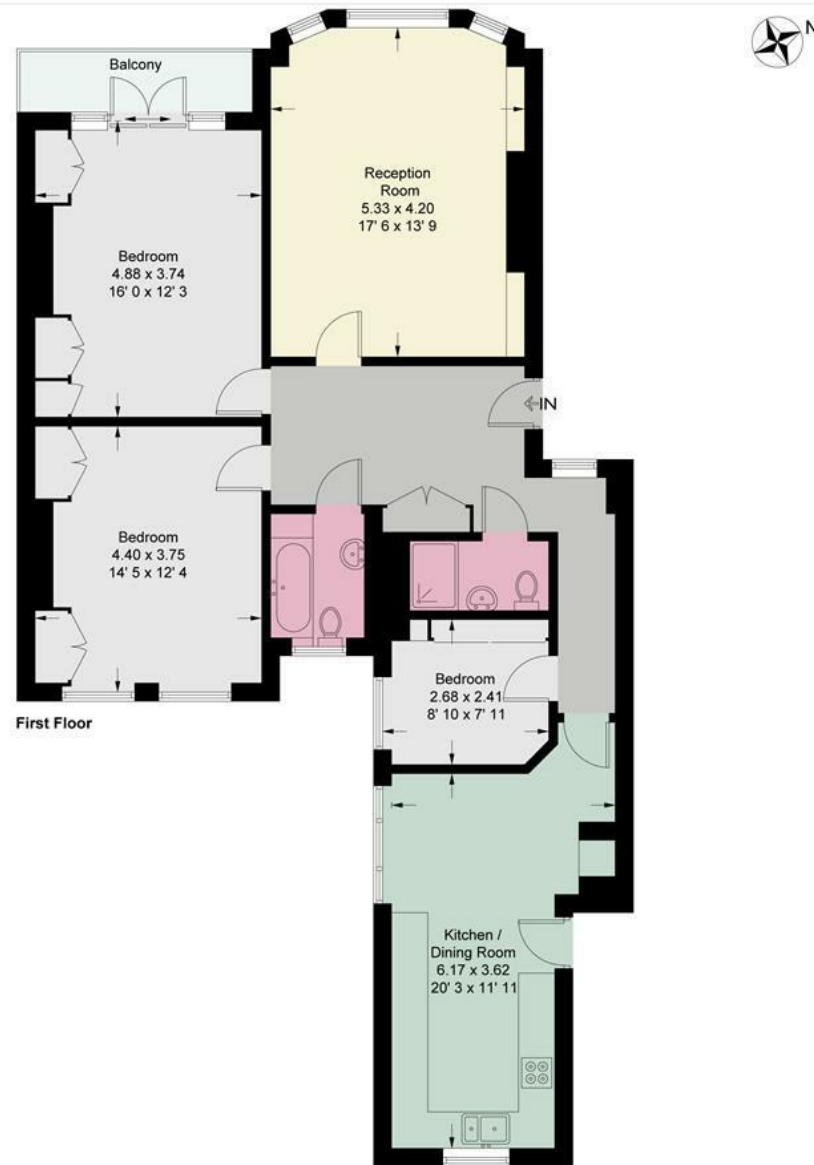






Castelnau Mansions

Approximate Gross Internal Area = 1182 sq ft / 109.8 sq m



This plan is not to scale and must be used as layout guidance only. All measurements and areas are approximate and should not be relied upon to provide accurate information. This plan must not be relied upon when making property valuations, design considerations or any other such relevant decisions. We accept no responsibility or liability (whether in contract, tort or otherwise) in relation to any loss whatsoever arising from or in connection with any use of this plan or the adequacy, accuracy or completeness of it or any information within it.





**JAMES
ANDERSON**

65 Barnes High Street
Barnes
SW13 9LD

0208 878 8688
barnes2@jamesanderson.co.uk
www.jamesanderson.co.uk

