



**JAMES
ANDERSON**



TO LET

Dovecote Gardens, Mortlake, SW14

£1,750 Per Month

Per Month

This spacious ground-floor apartment is situated in a modern private development in Mortlake, just moments from the river and local transport links. The property features an entrance hall, a bright reception room with bay windows, a large double bedroom with built-in storage, a modern kitchen with appliances, and a well-appointed bathroom. Additional benefits include gas central heating and allocated parking. The apartment is offered unfurnished, providing a fantastic opportunity to create your ideal home in this sought-after location.



One Bedroom Apartment



Modern Bathroom



Spacious Reception



Fully Fitted Kitchen



EPC C / Council Tax D / Deposit £2,019.23



Mortlake Station



St Mary Magdalene School



Bus Station



Off Street Parking

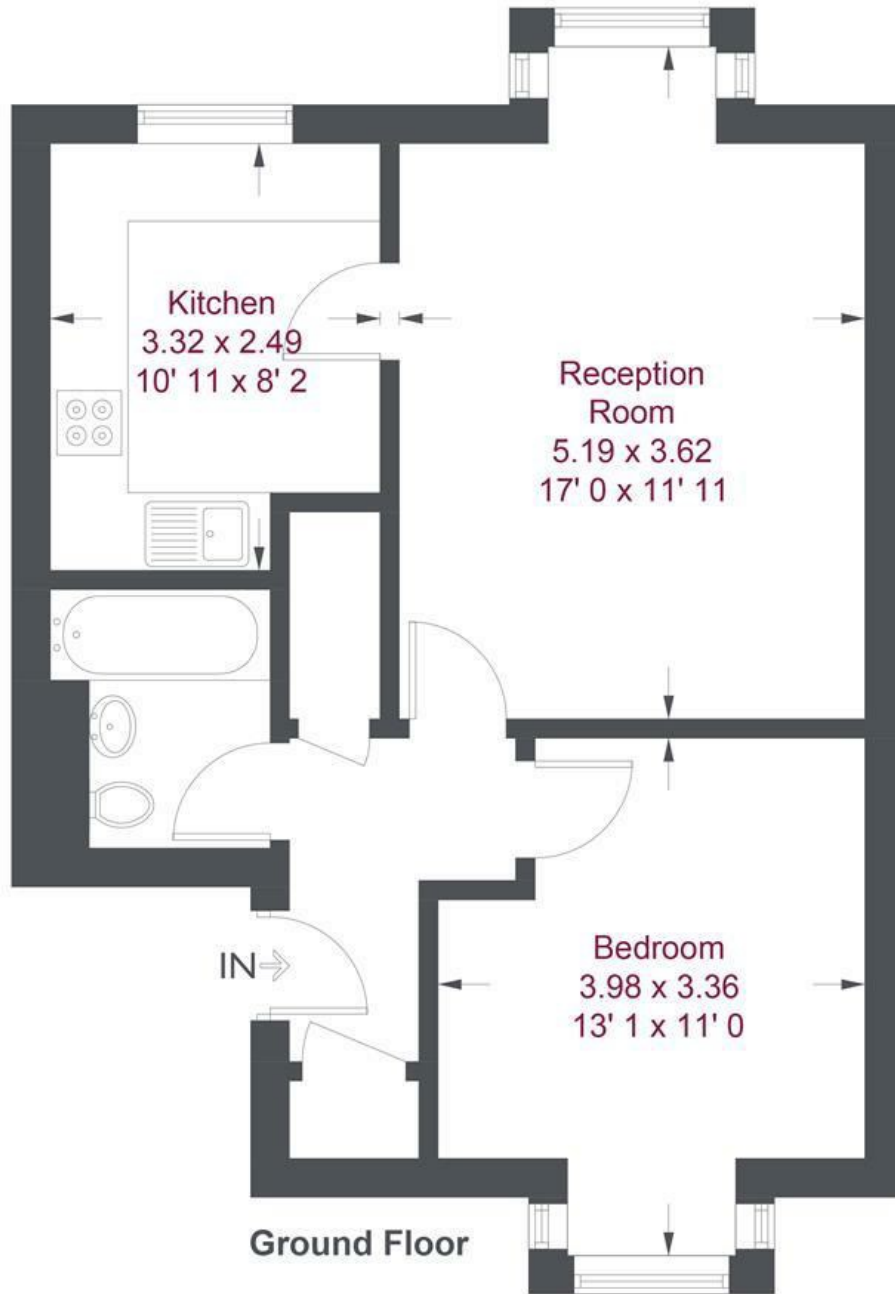


12 Month Minimum Term / Holding Deposit £403.84



OPEN 7 DAYS A WEEK • Weekdays until 9pm • Weekends until 5pm

0208 878 8688



Dovecote Gardens

Approximate Gross Internal Area = 523 sq ft / 48.6 sq m

Not to scale, for guidance only and must not be relied upon as a statement of fact
 All measurements and areas are approximate only and have been prepared in accordance with the current edition of the RICS Code of Measuring Practice

| Energy Efficiency Rating | | Current | Potential |
|---|--|-------------------------|-----------|
| Very energy efficient - lower running costs | | | |
| (92 plus) A | | | |
| (81-91) B | | | |
| (69-80) C | | | |
| (55-68) D | | | |
| (39-54) E | | | |
| (21-38) F | | | |
| (1-20) G | | | |
| Not energy efficient - higher running costs | | | |
| England & Wales | | EU Directive 2002/91/EC | |

| Environmental Impact (CO ₂) Rating | | Current | Potential |
|---|--|-------------------------|-----------|
| Very environmentally friendly - lower CO ₂ emissions | | | |
| (92 plus) A | | | |
| (81-91) B | | | |
| (69-80) C | | | |
| (55-68) D | | | |
| (39-54) E | | | |
| (21-38) F | | | |
| (1-20) G | | | |
| Not environmentally friendly - higher CO ₂ emissions | | | |
| England & Wales | | EU Directive 2002/91/EC | |

