



**JAMES
ANDERSON**

293 Lower Richmond Road
Richmond TW9
£475,000



293 Lower Richmond Road Richmond TW9

A bright and spacious two bedroom, two bathroom first floor apartment with a south facing balcony. This well presented apartment has accommodation arranged to provide a double aspect open plan kitchen/reception room with floor to ceiling windows, a principal bedroom with en-suite shower room, second double bedroom and a modern family bathroom. The property further benefits from ample storage including a utility cupboard, a private south facing balcony, lift access and has an EPC B rating.

Owens Court is part of a modern development located on Lower Richmond Road, offering communal gardens, bikes sheds, visitors parking and access to car club. North Sheen (Zone 3) station is just a short walk, as is Richmond town centre with its extensive shopping and leisure facilities and transport links. Kew Gardens and village and Richmond Park are also near by.

Leasehold: 86 years remaining
Groud rent: £200 per year
Service charge: £2,276 per year















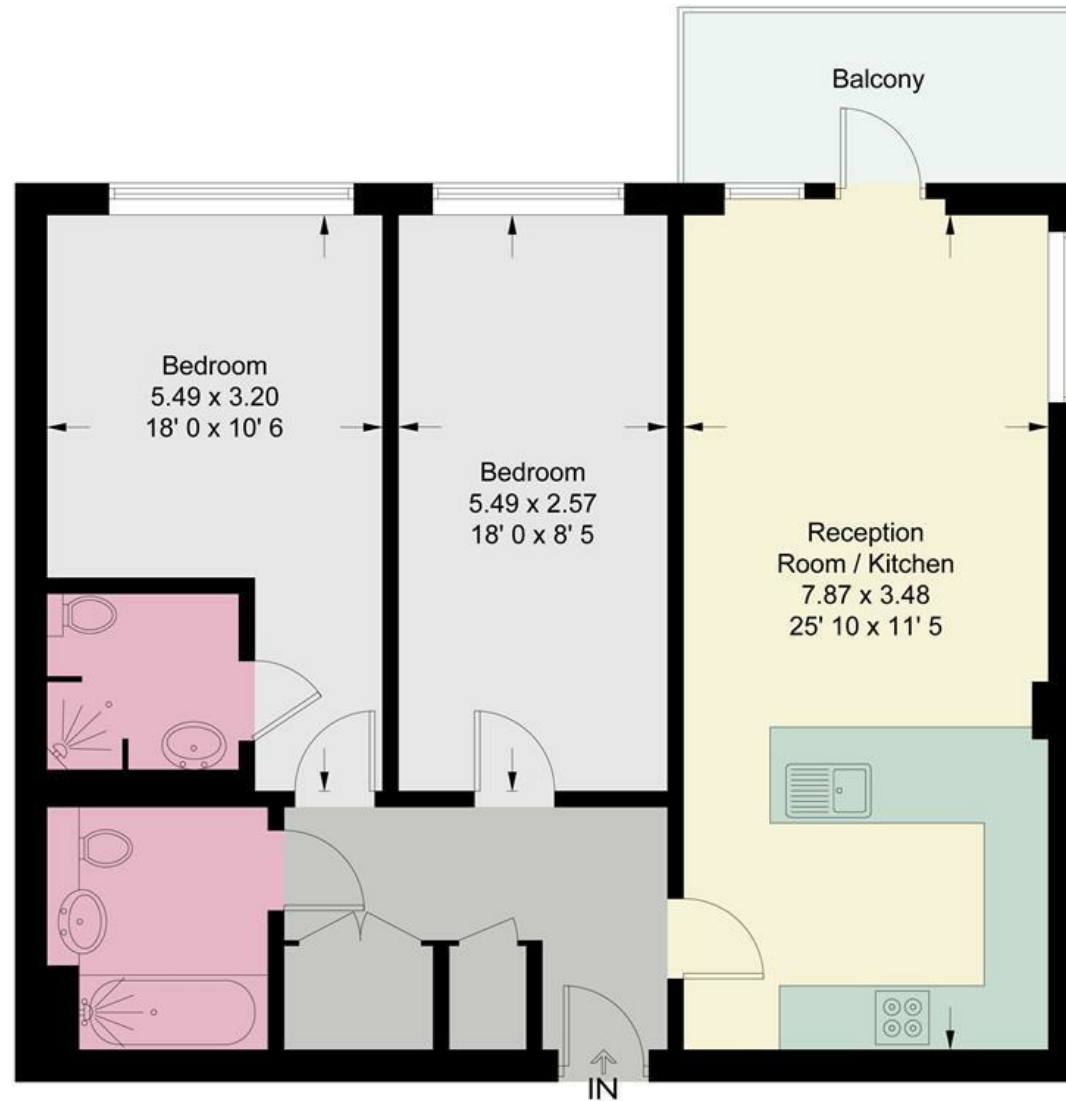


Owens Court

Approximate Gross Internal Area = 822 sq ft / 76.4 sq m



JAMES
ANDERSON



First Floor



JAMES
ANDERSON

This plan is not to scale and must be used as layout guidance only. All measurements and areas are approximate and should not be relied upon to provide accurate information. This plan must not be relied upon when making property valuations, design considerations or any other such relevant decisions. We accept no responsibility or liability (whether in contract, tort or otherwise) in relation to any loss whatsoever arising from or in connection with any use of this plan or the adequacy, accuracy or completeness of it or any information within it.





363 Upper Richmond Road West
East Sheen
SW14 7NX

020 8876 6611
sales@jasheen.co.uk
www.jamesanderson.co.uk

