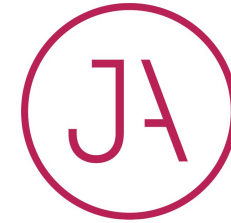




**JAMES  
ANDERSON**

**Maltings Close  
Barnes SW13  
£1,100,000**





## Maltings Close Barnes SW13

A lovely modern mews style property ideally situated in the heart of Barnes Village, close to Barnes Bridge Station, The River Thames, and the local shops and amenities on Barnes High Street. There is impressive light and spacious accommodation over three floors which is arranged to provide a stylish modern kitchen/dining room, with a breakfast bar island, utility area, and modern shower room on the ground floor, with two bedrooms and a modern family bathroom on the first floor, with a large, bright and spacious room on the second floor that has a balcony, and offers the flexibility to be a bedroom or a living room. The property is available for sale with no onward chain. Barnes and Barnes Bridge stations provide a service into London Waterloo, whilst there are good bus services to Richmond and Putney. Hammersmith underground is also nearby. The schools in the area include The St Pauls School, Harrodian School, The Swedish School, Ibstock Place, St Osmunds (RC), and Barnes Primary School to name a few.





























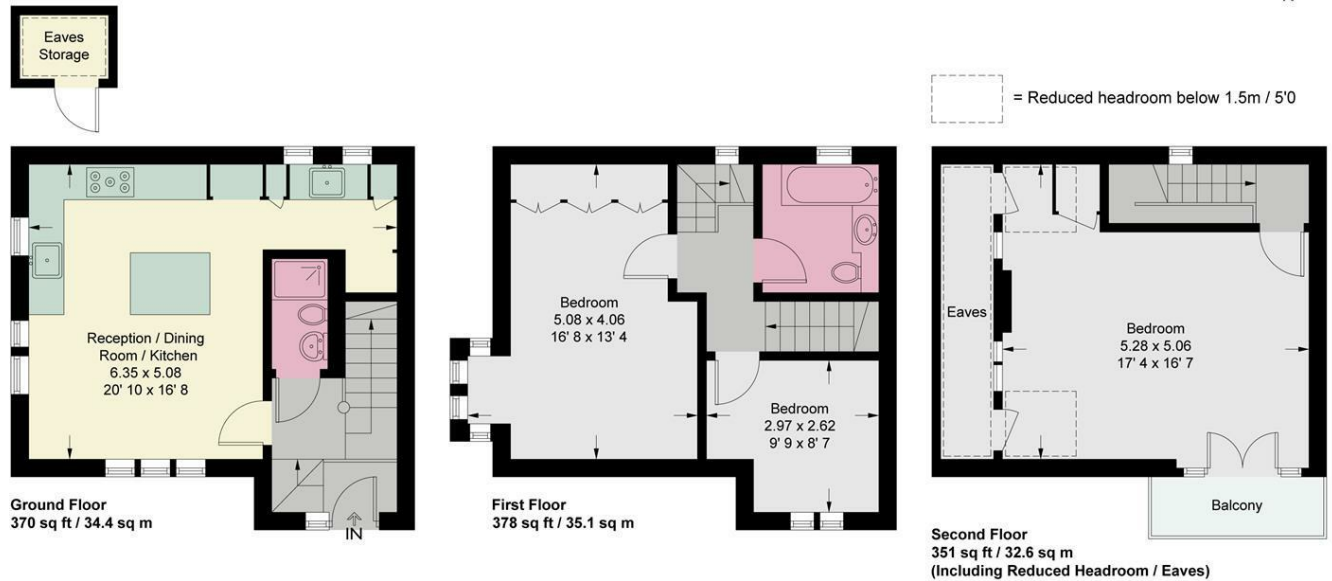






## Maltings Close

Approximate Gross Internal Area = 1052 sq ft / 97.9 sq m  
 (Excluding Reduced Headroom / Eaves / Storage)  
 Reduced Headroom / Eaves / Storage = 52 sq ft / 4.8 sq m  
 Total = 1106 sq ft / 102.7 sq m



This plan is not to scale and must be used as layout guidance only. All measurements and areas are approximate and should not be relied upon to provide accurate information. This plan must not be relied upon when making property valuations, design considerations or any other such relevant decisions. We accept no responsibility or liability (whether in contract, tort or otherwise) in relation to any loss whatsoever arising from or in connection with any use of this plan or the adequacy, accuracy or completeness of it or any information within it.







64 Barnes High Street  
Barnes  
SW13 9LD

020 8876 0100  
sales@jabarnes.co.uk  
www.jamesanderson.co.uk

