



**JAMES  
ANDERSON**



## TO LET

Priests Bridge, East Sheen, SW14

## £2,250 Per Month

Per Month

Three bedroom ground floor maisonette situated in the Priests Bridge area of East Sheen, not far from the array of shops, cafes and restaurants in East Sheen and on White Hart Lane. The apartment is also a short distance from Barnes station with direct links to Waterloo (22mins). The property offers a very large reception area with doors to a balcony, three spacious bedrooms with wooden floors, a fully fitted brand new kitchen, family bathroom and separate WC. The property is within easy reach of East Sheen Primary School, and a short walk to the River Thames.



Three Double Bedrooms



Bathroom with Separate W/C



Very Large Reception



Fitted Kitchen



EPC C | Council Tax D | Deposit £2596.15



Barnes Station



East Sheen Primary School



Close to White Hart Lane



Private Balcony

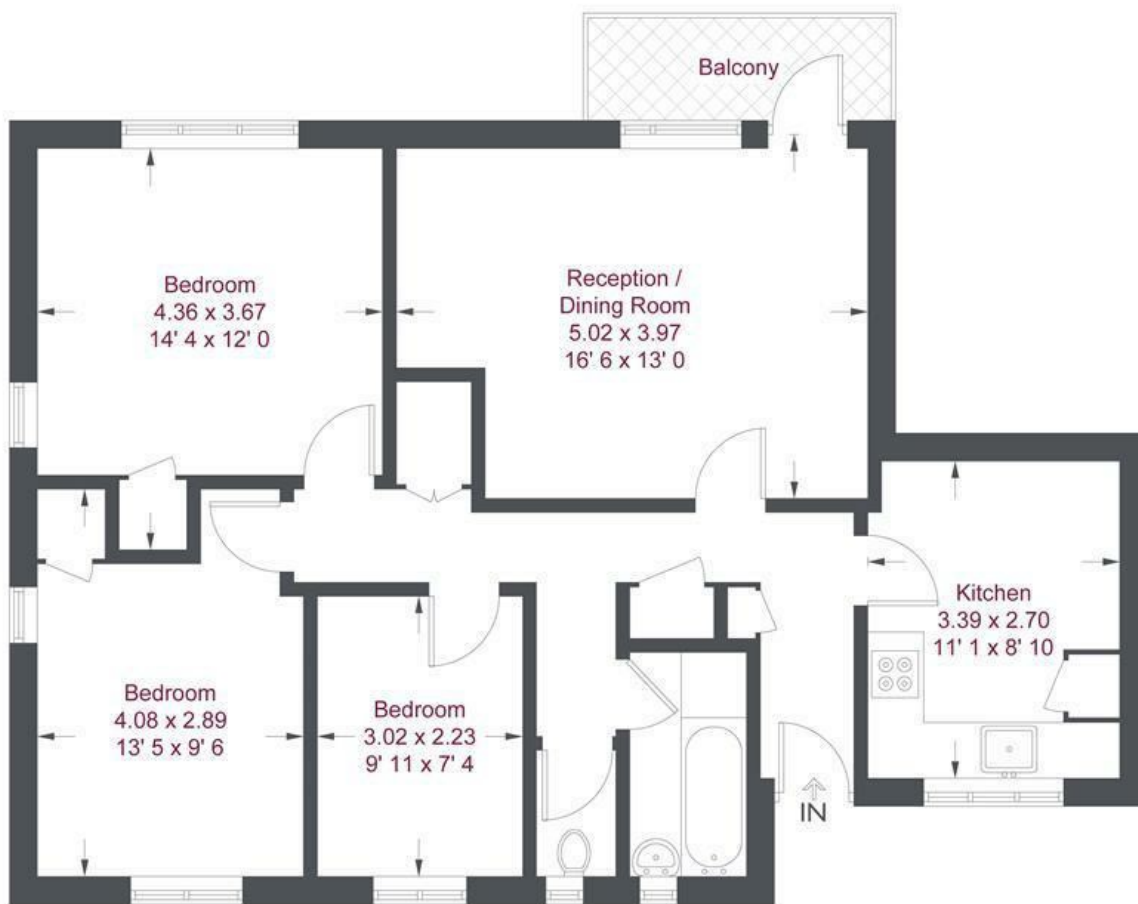


Ground Floor Apartment | Holding Deposit £519.23



OPEN 7 DAYS A WEEK • Weekdays until 9pm • Weekends until 5pm

0208 876 6611



Ground Floor

## Brook Court

Approximate Gross Internal Area = 861 sq ft / 80 sq m

Not to scale, for guidance only and must not be relied upon as a statement of fact  
 All measurements and areas are approximate only and have been prepared in accordance with the current edition of the RICS Code of Measuring Practice

Energy Efficiency Rating		
	Current	Potential
<i>Very energy efficient - lower running costs</i>		
(92 plus) <b>A</b>		
(81-91) <b>B</b>		
(69-80) <b>C</b>		
(55-68) <b>D</b>		
(39-54) <b>E</b>		
(21-38) <b>F</b>		
(1-20) <b>G</b>		
<i>Not energy efficient - higher running costs</i>		
<b>England &amp; Wales</b>	EU Directive 2002/91/EC	

Environmental Impact (CO <sub>2</sub> ) Rating		
	Current	Potential
<i>Very environmentally friendly - lower CO2 emissions</i>		
(92 plus) <b>A</b>		
(81-91) <b>B</b>		
(69-80) <b>C</b>		
(55-68) <b>D</b>		
(39-54) <b>E</b>		
(21-38) <b>F</b>		
(1-20) <b>G</b>		
<i>Not environmentally friendly - higher CO2 emissions</i>		
<b>England &amp; Wales</b>	EU Directive 2002/91/EC	

