



**JAMES  
ANDERSON**

Upper Richmond Road West  
London SW14  
£600,000



## Upper Richmond Road West London SW14

- THREE BEDROOMS - TWO BATHROOMS - SPLIT LEVEL - 1,200 SQFT - NO CHAIN -

Nestled in the heart of Sheen, this fantastic three-bedroom apartment spans over two floors and offers more than 1,200 sqft of living space. With its own private entrance, this property perfectly balances convenience and spaciousness with exceptional natural light. The apartment boasts a fully equipped kitchen with a separate utility area, two bathrooms, an inviting south facing reception room with space for dining and three double bedrooms.

Situated close to all the shops and amenities, Mortlake station, and within the catchment area of the outstanding Thomson House Primary School, this apartment truly offers the perfect blend of comfort and convenience. Additionally, the open acres of Richmond Park are just a short walk away, providing a wonderful escape to nature right on your doorstep.

















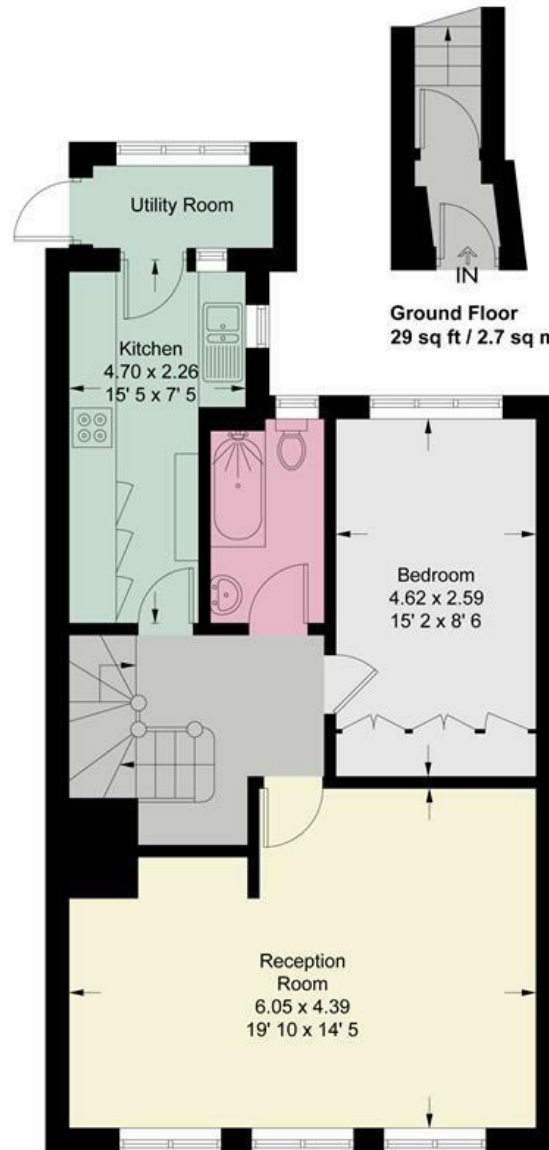


# Upper Richmond Road

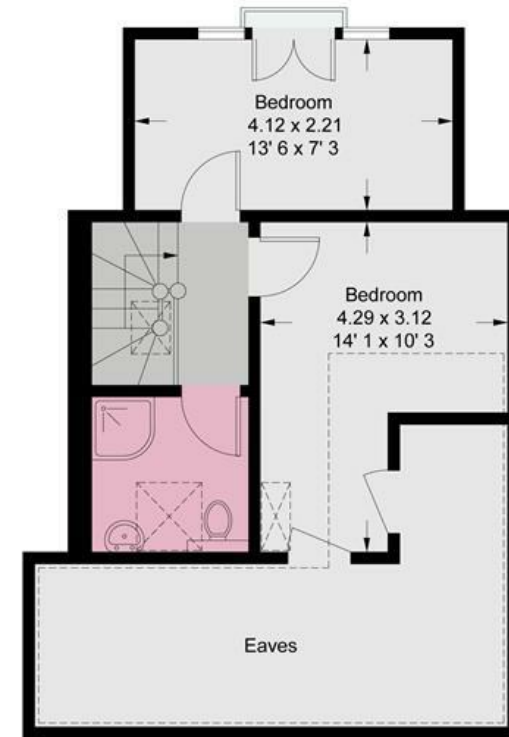
Approximate Gross Internal Area = 1010 sq ft / 93.9 sq m  
(Excluding Reduced Headroom / Eaves)  
Reduced Headroom / Eaves = 197 sq ft / 18.3 sq m  
Total = 1207 sq ft / 112.2 sq m



JAMES  
ANDERSON



= Reduced headroom below 1.5m / 5'0



JAMES  
ANDERSON

This plan is not to scale and must be used as layout guidance only. All measurements and areas are approximate and should not be relied upon to provide accurate information. This plan must not be relied upon when making property valuations, design considerations or any other such relevant decisions. We accept no responsibility or liability (whether in contract, tort or otherwise) in relation to any loss whatsoever arising from or in connection with any use of this plan or the adequacy, accuracy or completeness of it or any information within it.





363 Upper Richmond Road West  
East Sheen  
SW14 7NX

020 8876 6611  
sales@jasheen.co.uk  
www.jamesanderson.co.uk

