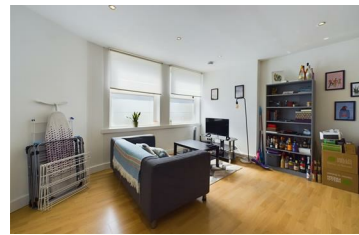
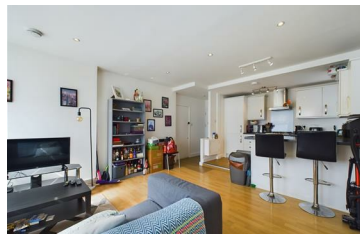




**JAMES
ANDERSON**



FOR SALE

£450,000

Earlsfield Road, London, SW18

Welcome to this charming property located on Earlsfield Road in London. This delightful flat conversion boasts a cosy reception room, perfect for relaxing or entertaining guests. With two spacious bedrooms and two bathrooms, this property offers ample space for comfortable living.

The open plan living area creates a bright and airy atmosphere, ideal for enjoying quality time with family and friends. Whether you're a first-time buyer or looking for a new investment opportunity, this property is sure to impress.

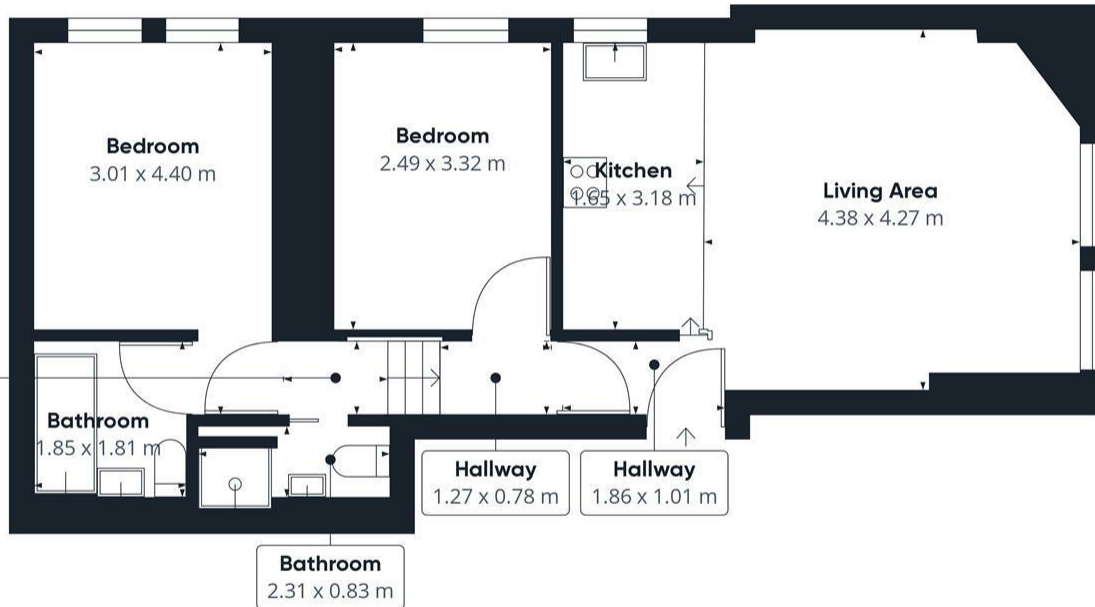
Situated in a desirable location, this flat provides easy access to local amenities, transport links, and green spaces. Don't miss out on the chance to make this property your own and experience the best of London living. Contact us today to arrange a viewing and start your journey towards owning this fantastic home on Earlsfield Road.

Leasehold
£300 p/year service
£200 p/year ground rent,
960 years on lease



OPEN 7 DAYS A WEEK • Weekdays until 9pm • Weekends until 5pm

0208 785 4400



Approximate total area⁽¹⁾
53.74 m²

(1) Excluding balconies and terraces

While every attempt has been made to ensure accuracy, all measurements are approximate, not to scale. This floor plan is for illustrative purposes only.

GIRAFFE360

