



JAMES
ANDERSON



TO LET

Stanley Road, East Sheen, SW14

£2,750 Per Month

Per Month

A charming semi detached cottage in a highly sought after Parkside location close to Sheen Mount Primary School and the local amenities of East Sheen Town Centre. The property comprises bright and spacious lounge/dining room leading to the recently fitted kitchen/breakfast room. The first floor provides a double bedroom and family bathroom and on the second floor is a further double bedroom. Additional benefits include ample storage throughout the property, feature fireplaces and west facing rear garden.



Two Double Bedrooms



One Bathroom



Reception & Dining Room



Galley Kitchen with Access to Rear



EPC D | Council Tax F | Deposit £3173.07



Close to Transport Links



Close to Sheen Mount School



Richmond Park Near By



West Facing Rear Garden

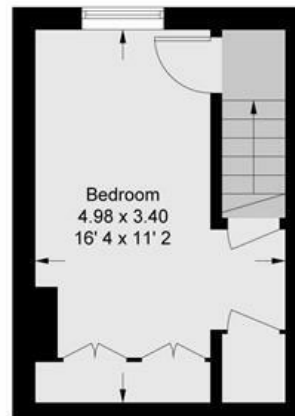
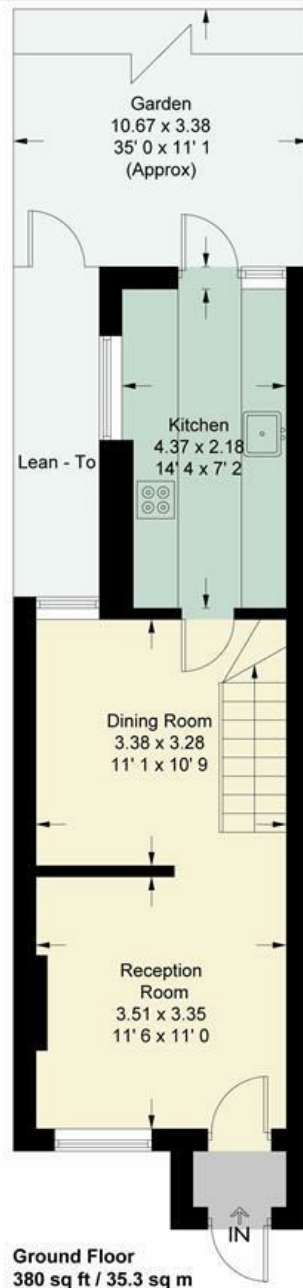


12 Month Minimum Term | Holding Deposit £634.62



OPEN 7 DAYS A WEEK • Weekdays until 9pm • Weekends until 5pm

0208 876 6611



This plan is not to scale and must be used as layout guidance only. All measurements and areas are approximate and should not be relied upon to provide accurate information. This plan must not be relied upon when making property valuations, design considerations or any other such relevant decisions. We accept no responsibility or liability (whether in contract, tort or otherwise) in relation to any loss whatsoever arising from or in connection with any use of this plan or the adequacy, accuracy or completeness of it or any information within it.



Energy Efficiency Rating		Current	Potential
Very energy efficient - lower running costs			
(92 plus) A			87
(81-91) B			
(69-80) C			
(55-68) D			
(39-54) E		59	
(21-38) F			
(1-20) G			
Not energy efficient - higher running costs			
England & Wales		EU Directive 2002/91/EC	

Environmental Impact (CO ₂) Rating		Current	Potential
Very environmentally friendly - lower CO ₂ emissions			
(92 plus) A			
(81-91) B			
(69-80) C			
(55-68) D			
(39-54) E			
(21-38) F			
(1-20) G			
Not environmentally friendly - higher CO ₂ emissions			
England & Wales		EU Directive 2002/91/EC	

