



JAMES
ANDERSON

Emerald Square
London SW15
Guide Price £1,350,000



Emerald Square London SW15

This show like home has been fully refurbished and extended by the existing owner to provide ample living space for a growing family while being located in a highly sought after St. James development built in 2013.

Accommodation:

The extended lounge is perfectly suited for entertaining with plenty of natural light streaming through with bi-fold doors leading to the meticulously curated south-facing landscaped rear garden which serves as a great place to host those summer al-fresco dining parties with extensive outdoor lighting. The modern high spec kitchen offers an array of appliances with breakfast bar while the hallway offers plenty of storage leading to a WC with wash hand basin. The first floor offers three double bedrooms and a three piece bathroom suite with the rear bedroom providing a lovely balcony which serves as a sun trap. The second floor provides a further two double bedrooms with en-suite bathrooms with an abundance of built in storage. This home provides off street parking for two cars, solar panels and is tucked away in a quiet corner of the development with little to no footfall.

Location:

Emerald Square is an attractive development, in a quiet residential location, adjacent to Roehampton Lane. The property is conveniently located close by to the Roehampton Club and the leafy, open expanses of Putney Heath, Richmond Park and Wimbledon Common. It is within very easy reach of both Putney and Barnes Mainline Station (National Rail) and Putney Bridge Underground Station (District Line) affording swift West End and City communications. It is well served by a number of bus routes into Richmond, Barnes, Hammersmith, Putney and South Kensington. Motorists are equally well served by the nearby A3. Putney High Street and Barnes Village can be found close by, offering excellent multiple and specialist shopping facilities. Emerald Square is located within the surrounding areas of Putney High, Falcon School, Ibstock Place and East Sheen Primary



















Emerald Square

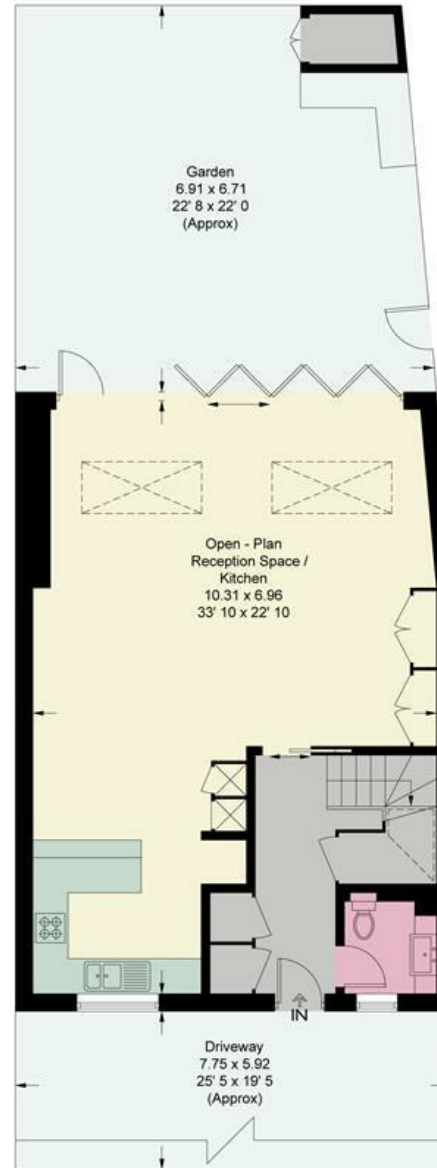
Approximate Gross Internal Area = 1775 sq ft / 164.8 sq m
(Excluding Reduced Headroom)

Reduced Headroom = 19 sq ft / 1.8 sq m

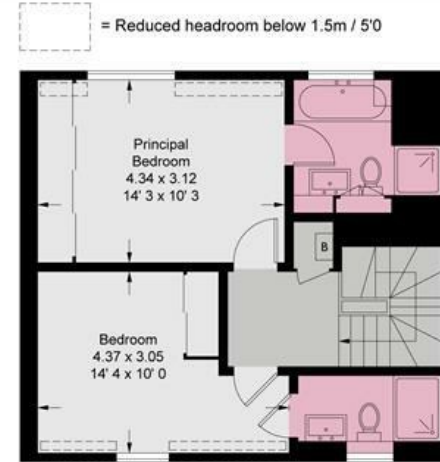
Total = 1794 sq ft / 166.6 sq m



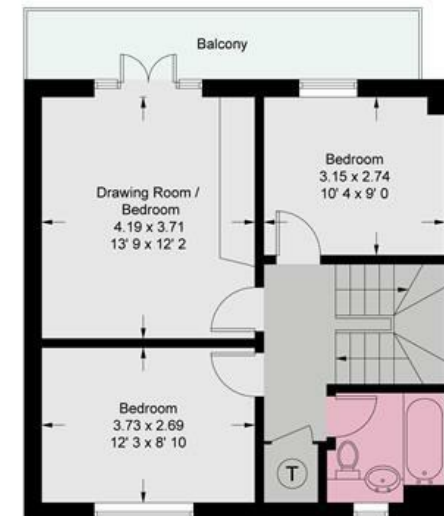
**JAMES
ANDERSON**



Ground Floor
771 sq ft / 71.6 sq m
(Including Reduced Headroom)



Second Floor
489 sq ft / 45.4 sq m
(Including Reduced Headroom)



First Floor
534 sq ft / 49.6 sq m

= Reduced headroom below 1.5m / 5'0



**JAMES
ANDERSON**

This plan is not to scale and must be used as layout guidance only. All measurements and areas are approximate and should not be relied upon to provide accurate information. This plan must not be relied upon when making property valuations, design considerations or any other such relevant decisions. We accept no responsibility or liability (whether in contract, tort or otherwise) in relation to any loss whatsoever arising from or in connection with any use of this plan or the adequacy, accuracy or completeness of it or any information within it.





78 Lower Richmond Road
Putney
SW15 1LL

020 8788 6611
sales@japutney.co.uk
www.jamesanderson.co.uk

