



JAMES
ANDERSON



FOR SALE

£1,225,000

Thornton Road, London, SW14

VIEWINGS FROM SATURDAY 30TH MARCH - Please call to book

Exceptional, refurbished and extended four bedroom family home located in the centre of East Sheen. This stunning property provides superb, modern and light accommodation over three floors. The ground floor offers a spacious reception room, cloakroom, and a fabulous extended kitchen/dining room with bi-folding doors out to the landscaped garden. The first floor comprises two double bedrooms with a gorgeous family bathroom room, a further bedroom/study and stairs leading to the loft conversion. The top floor provides an impressive principal bedroom with a luxurious en-suite shower room and ample storage in the eaves. Further benefits include wooden double glazing throughout, underfloor heating in the kitchen and bathrooms and secure bike storage in the front garden. Thornton Road is a very desirable tree lined road located close to the shops and restaurants in East Sheen and within walking distance to Mortlake Railway Station for services into London Waterloo. Bus routes to Richmond, Putney and Hammersmith are available along the Upper Richmond Road West and the Ofsted rated 'Outstanding' Thomson House Primary School is nearby.



Four Bedrooms



Two Bathrooms



Stunning Extended Kitchen / Family Room



Reception Room With Feature Fireplace



Freehold | EPC D | Council Tax F



Mortlake Station (Zone 3)



Thomson House Primary School



Excellent Location



Beautifully Presented Throughout

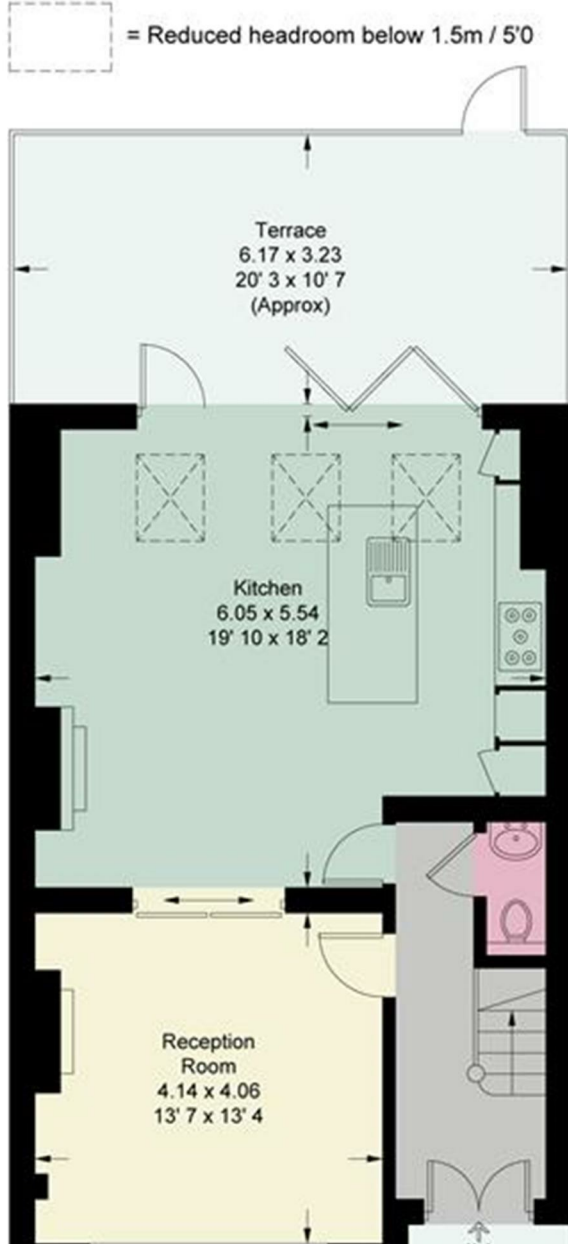


No Onward Chain



OPEN 7 DAYS A WEEK • Weekdays until 9pm • Weekends until 5pm

020 8876 6611



Second Floor
463 sq ft / 43 sq m
(Including Reduced Headroom / Eaves)

