



**JAMES
ANDERSON**



TO LET

Bowman Mews, Southfields, SW18

£1,600 Per Month

Per Month

The property comprises a large reception room, modern kitchen, double bedroom with built in storage and bathroom. There is also off street parking for one car. Bowman Mews is located in close proximity to all the amenities of Southfields village including Southfields Underground Station (District Line), shops, cafes, restaurants, banks and gym.



One Double Bedroom



One Bathroom



Large Reception Room



Modern Kitchen



EPC Rating C / Council Tax C / Holding Deposit £369.23



Southfields Tube



Sheringdale Primary



Wimbledon Tennis



Part Furnished



Minimum Term 12 Months / Deposit £1846.15

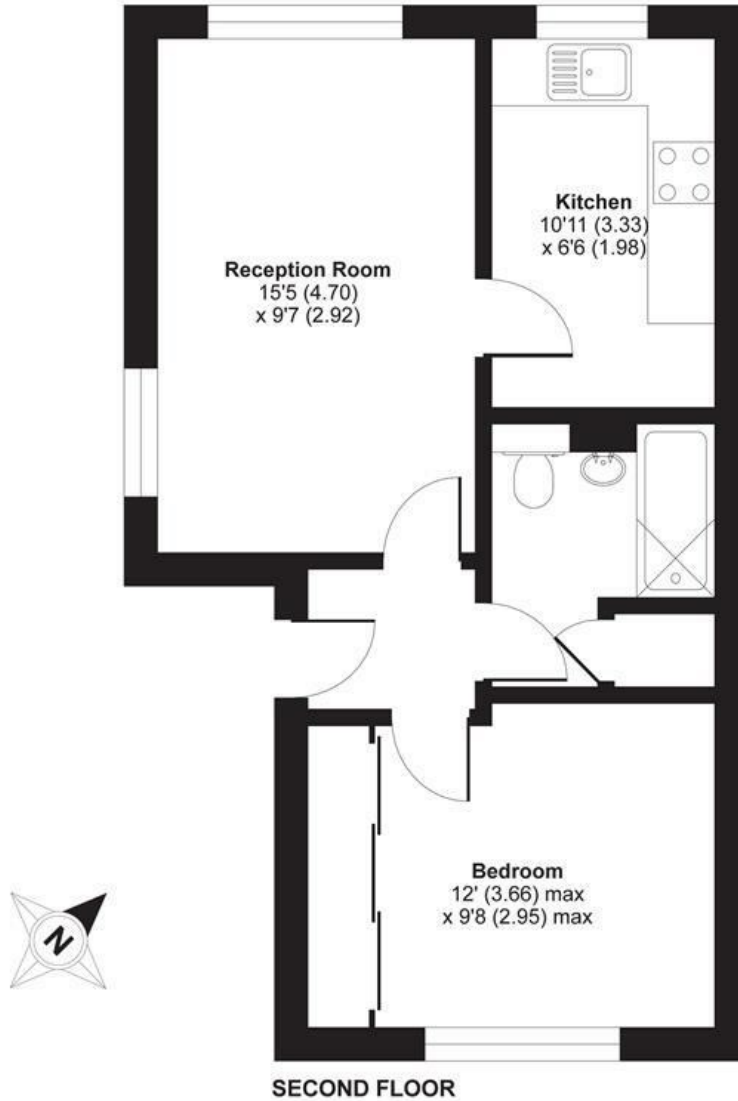


OPEN 7 DAYS A WEEK • Weekdays until 9pm • Weekends until 5pm

0208 785 4400

Bowman Mews, London, SW18

APPROX. GROSS INTERNAL FLOOR AREA 427 SQ FT 39.7 SQ METRES



Whilst every attempt has been made to ensure the accuracy of the floor plan contained here, measurements of doors, windows and rooms are approximate and no responsibility is taken for any error, omission or misstatement. These plans are for representation purposes only as defined by RICS Code of Measuring Practice and should be used as such by any prospective purchaser. Specifically no guarantee is given on the total square footage of the property if quoted on this plan. Any figure given is for initial guidance only and should not be relied on as a basis of valuation.

Copyright nichecom.co.uk 2019 Produced for James Anderson REF : 498304

Energy Efficiency Rating		
	Current	Potential
<i>Very energy efficient - lower running costs</i>		
(92 plus) A		
(81-91) B		
(69-80) C		
(55-68) D		
(39-54) E		
(21-38) F		
(1-20) G		
<i>Not energy efficient - higher running costs</i>		
England & Wales	EU Directive 2002/91/EC	

Environmental Impact (CO ₂) Rating		
	Current	Potential
<i>Very environmentally friendly - lower CO₂ emissions</i>		
(92 plus) A		
(81-91) B		
(69-80) C		
(55-68) D		
(39-54) E		
(21-38) F		
(1-20) G		
<i>Not environmentally friendly - higher CO₂ emissions</i>		
England & Wales	EU Directive 2002/91/EC	

