



**JAMES
ANDERSON**



TO LET

Deanhill Court, East Sheen, SW14

£2,000 Per Month

Per Month

A spacious and very well presented two double bedroom flat set toward the rear of a hugely popular private mansion block on Parkside, East Sheen. With the rare benefit of lift access, this flat is set on the second floor and offers plenty of storage, a separate kitchen and a bay fronted living room with period feature fireplace. Sheen Mount Primary School is moments away and the flat is very accessible to plenty of bus routes and overground trains into and out of London as well as the open spaces of Sheen Common and Richmond Park. East Sheen and Richmond offers plenty of shops, cafes and restaurants with a lovely village feel and is good for families and commuters.



Two Double Bedrooms



One Bathroom



Bay Fronted Reception Room



Modern Fully Equipped Kitchen



EPC C | Council Tax D | Deposit £2307.69



Mortlake Station & North Sheen Station



Sheen Mount School Catchment



Private Gated Block



In Excess Of 750 Sqft

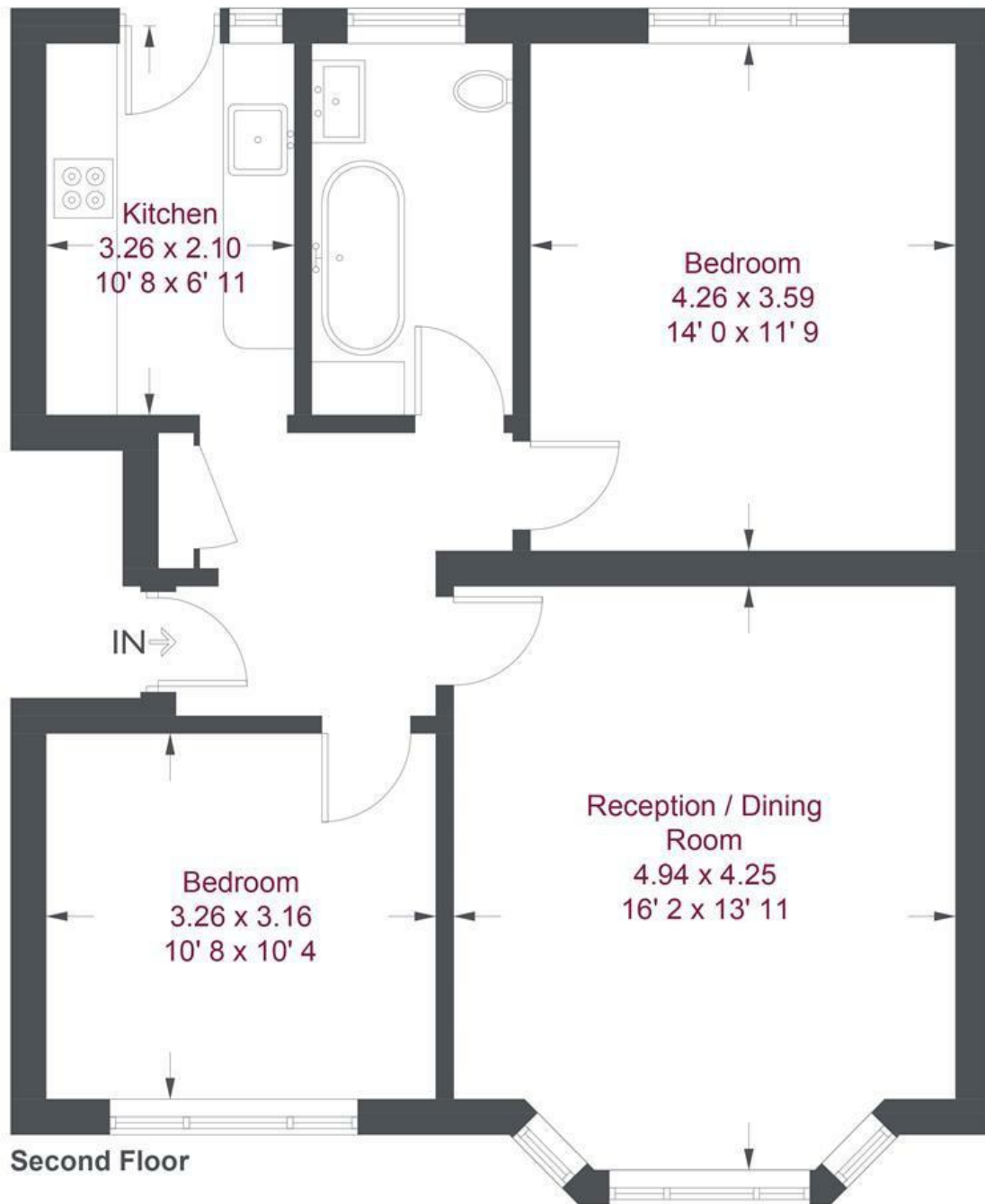


Holding Deposit £461.53 | Minimum Term 12 Months



OPEN 7 DAYS A WEEK • Weekdays until 9pm • Weekends until 5pm

0208 876 6611



Deanhill Court

Approximate Gross Internal Area = 754 sq ft / 70.1 sq m

Not to scale, for guidance only and must not be relied upon as a statement of fact
 All measurements and areas are approximate only and have been prepared in accordance with the current edition of the RICS Code of Measuring Practice

Energy Efficiency Rating		
	Current	Potential
Very energy efficient - lower running costs		
(92 plus) A		
(81-91) B		
(69-80) C		
(55-68) D		
(39-54) E		
(21-38) F		
(1-20) G		
Not energy efficient - higher running costs		
England & Wales	EU Directive 2002/91/EC	

Environmental Impact (CO ₂) Rating		
	Current	Potential
Very environmentally friendly - lower CO ₂ emissions		
(92 plus) A		
(81-91) B		
(69-80) C		
(55-68) D		
(39-54) E		
(21-38) F		
(1-20) G		
Not environmentally friendly - higher CO ₂ emissions		
England & Wales	EU Directive 2002/91/EC	

