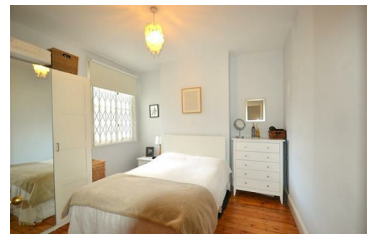




JAMES
ANDERSON



TO LET

Ashleigh Road, Mortlake, SW14

£2,000 Per Month

Per Month

Well presented ground floor maisonette with wooden floors and neutral decor throughout. The accommodation offers an entrance hall leading to a bright living room, master bedroom, fully tiled family bathroom with an overhead shower, and an open plan kitchen/diner. There is direct access onto an easy to maintain private garden with storage shed. Moments from the River Thames, Ashleigh Road is a pretty tree lined street located a short walk from Mortlake Station and has excellent bus services to Hammersmith.



One Bedroom Garden Flat



Modern Bathroom



Bright Living Room



Open Plan Kitchen



EPC Rating D / Council tax D / Deposit £2,250



Thomson House School



Mortlake Station



Close to River Thames



Private Garden



12 Month Minimum Term / £450 Holding Deposit



OPEN 7 DAYS A WEEK • Weekdays until 9pm • Weekends until 5pm

0208 878 8688

