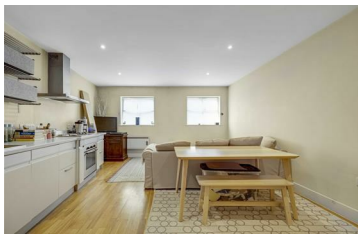




**JAMES  
ANDERSON**



## TO LET

Upper Richmond Road West, East Sheen, SW14

## £1,600 Per Month

Per Month

Fantastic one bedroom apartment with gated off-street parking. This property features an open-plan kitchen living area with wooden floors, spacious bedroom and modern bathroom. To the rear of the building is a secure, gated, off-street parking space for one car. Brancaster Mews is situated in the heart of East Sheen, a short walk from Waitrose, Mortlake Station, and all of the local cafes and restaurants.



One Bedroom



Modern Bathroom



Open Plan Reception



Fully Fitted Kitchen



EPC C | Council Tax C | Deposit £1846.15



Mortlake Station



Excellent Local Schools



Central Location



Off Street Parking

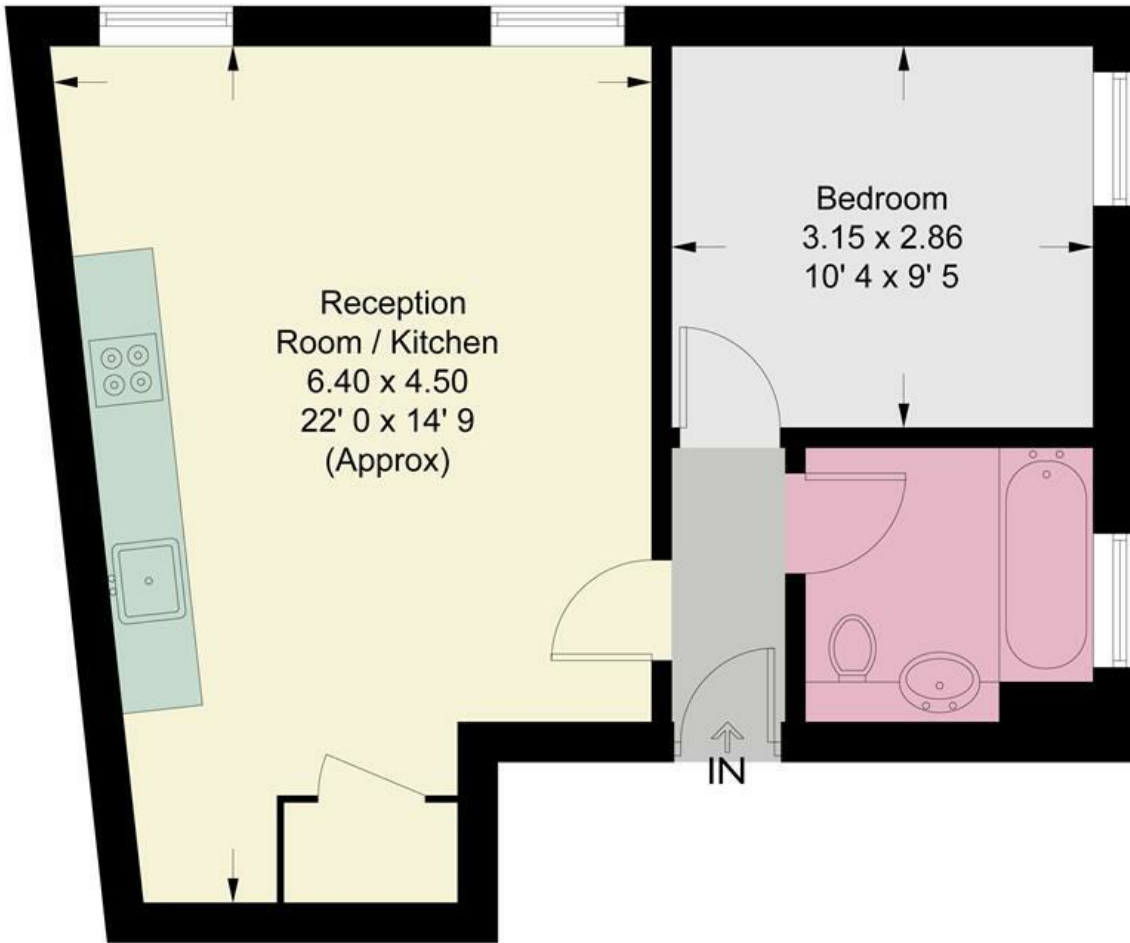


Holding Deposit £369.23 | Minimum Term 12 Months



OPEN 7 DAYS A WEEK • Weekdays until 9pm • Weekends until 5pm

0208 876 6611



This plan is not to scale and must be used as layout guidance only. All measurements and areas are approximate and should not be relied upon to provide accurate information. This plan must not be relied upon when making property valuations, design considerations or any other such relevant decisions. We accept no responsibility or liability (whether in contract, tort or otherwise) in relation to any loss whatsoever arising from or in connection with any use of this plan or the adequacy, accuracy or completeness of it or any information within it.



Energy Efficiency Rating		Current	Potential
Very energy efficient - lower running costs			
(92 plus) <b>A</b>			
(81-91) <b>B</b>			
(69-80) <b>C</b>			
(55-68) <b>D</b>			
(39-54) <b>E</b>			
(21-38) <b>F</b>			
(1-20) <b>G</b>			
Not energy efficient - higher running costs			
<b>England &amp; Wales</b>		EU Directive 2002/91/EC	

Environmental Impact (CO <sub>2</sub> ) Rating		Current	Potential
Very environmentally friendly - lower CO <sub>2</sub> emissions			
(92 plus) <b>A</b>			
(81-91) <b>B</b>			
(69-80) <b>C</b>			
(55-68) <b>D</b>			
(39-54) <b>E</b>			
(21-38) <b>F</b>			
(1-20) <b>G</b>			
Not environmentally friendly - higher CO <sub>2</sub> emissions			
<b>England &amp; Wales</b>		EU Directive 2002/91/EC	

