



**JAMES
ANDERSON**








TO LET

Clifford Avenue, East Sheen, SW14

£1,900 Per Month

Per Month

This top floor apartment offers a spacious reception room with wooden floors, separate fully fitted kitchen, bathroom with shower over bath and two double bedrooms. Further benefits include lift access and residents parking. Chertsey Court is a short distance from Mortlake green and Mortlake station conveniently placed for commuting.

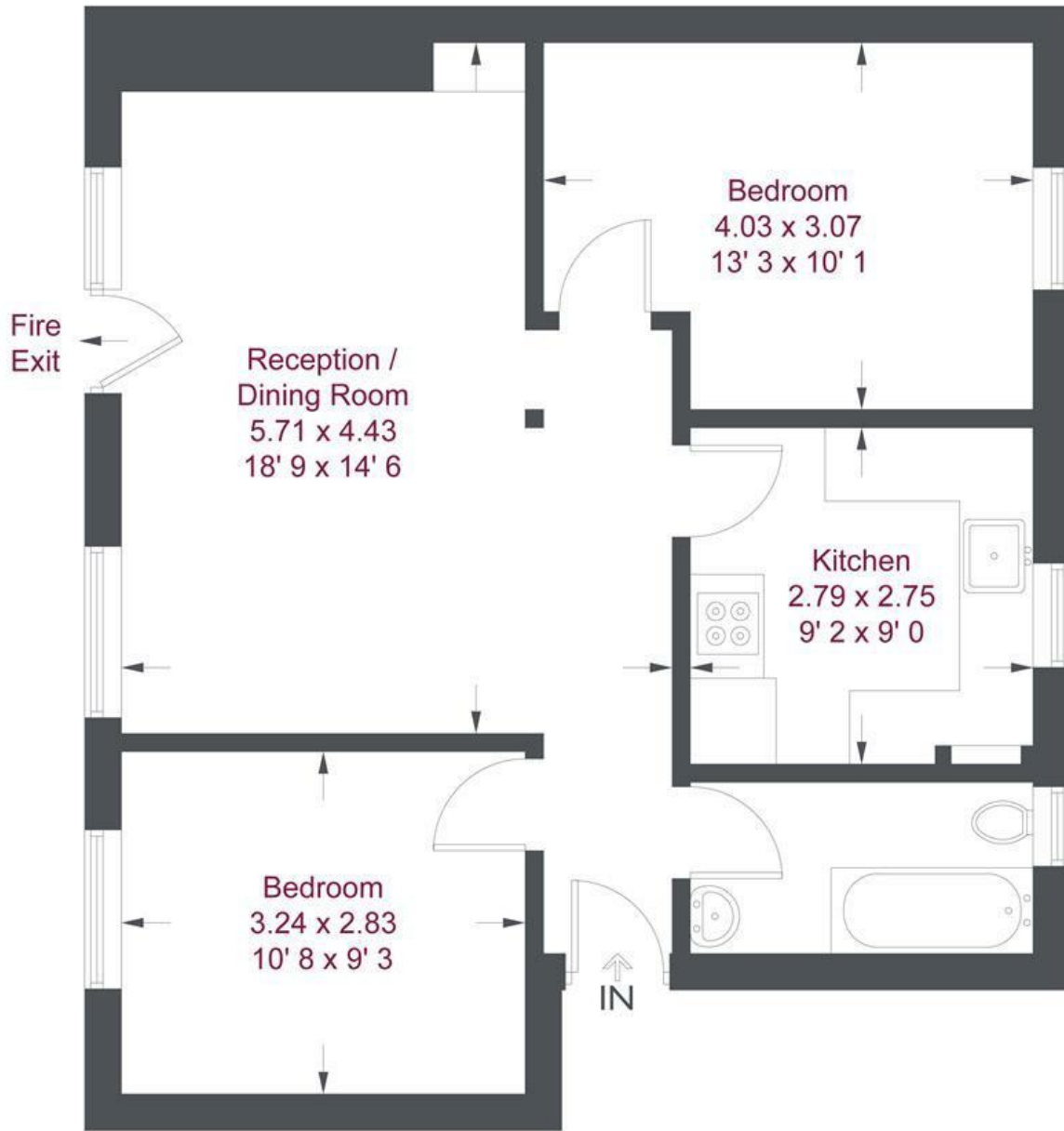
-  Two Bedrooms
-  Modern Bathroom
-  Unfurnished
-  Separate Kitchen
-  EPC D | Council Tax Band C

-  Mortlake Station
-  Thomson House School
-  Mortlake Green
-  Lift Access & Residents Parking
-  Deposit £2192.30 | Holding Deposit £438.46



OPEN 7 DAYS A WEEK • Weekdays until 9pm • Weekends until 5pm

0208 876 6611



Fourth Floor

Chertsey Court

Approximate Gross Internal Area = 662 sq ft / 61.5 sq m

Not to scale, for guidance only and must not be relied upon as a statement of fact
 All measurements and areas are approximate only and have been prepared in accordance with the current edition of the RICS Code of Measuring Practice

Energy Efficiency Rating		
	Current	Potential
<i>Very energy efficient - lower running costs</i>		
(92 plus) A		
(81-91) B		
(69-80) C		
(55-68) D	61	
(39-54) E		
(21-38) F		
(1-20) G		
<i>Not energy efficient - higher running costs</i>		
England & Wales	EU Directive 2002/91/EC	

Environmental Impact (CO ₂) Rating		
	Current	Potential
<i>Very environmentally friendly - lower CO2 emissions</i>		
(92 plus) A		
(81-91) B		
(69-80) C		
(55-68) D	56	80
(39-54) E		
(21-38) F		
(1-20) G		
<i>Not environmentally friendly - higher CO2 emissions</i>		
England & Wales	EU Directive 2002/91/EC	

