



**JAMES
ANDERSON**



TO LET

Upper Richmond Road West, East Sheen, SW14

£1,950 Per Month

Per Month

A fantastic two bedroom apartment, located centrally in East Sheen. The property features a spacious reception room and a large eat in kitchen / dining room. The bathroom has a bath, WC and a separate shower cubicle. The property is ideally situated for the extensive shopping and leisure amenities of East Sheen including Waitrose and a variety of independent shops, restaurants, bars and coffee shops. The outstanding Sheen Mount Primary School is within 0.3 miles. Whilst Mortlake Station which provides direct access to Central London, the River Thames and the extensive recreational amenities of Richmond Park, the largest of the Capital's eight Royal Parks and the biggest enclosed space in London are all approximately 0.6 miles away.



Two Bedrooms



One Bathroom



Part furnished



Open Plan Kitchen / Dining



EPC C | Council Tax Band C | Holding Deposit £450



Close to Mortlake Station



Thomson House Primary School



Centrally Located



Double Glazing



Deposit £2250 | Minimum Term 12 Months

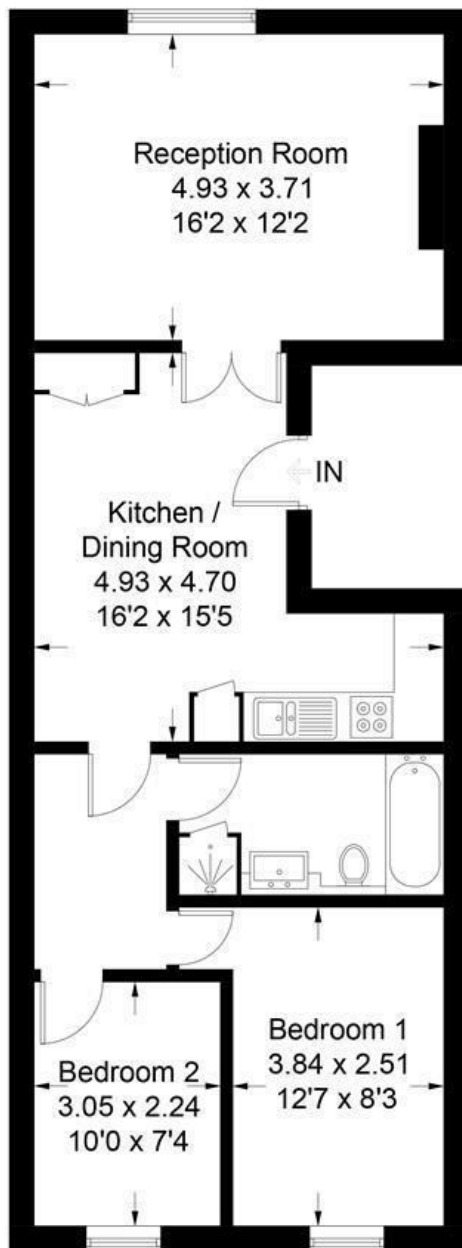


OPEN 7 DAYS A WEEK • Weekdays until 9pm • Weekends until 5pm

0208 876 6611

Upper Richmond Road, West, SW14

Approximate Gross Internal Area = 65.1 sq m / 701 sq ft



First Floor

Illustration for identification purposes only, measurements are approximate, not to scale. FloorplansUsketch.com © 2018 (ID 453074)

Energy Efficiency Rating		Current	Potential
Very energy efficient - lower running costs			
(92 plus) A			
(81-91) B			
(69-80) C			
(55-68) D			
(39-54) E			
(21-38) F			
(1-20) G			
Not energy efficient - higher running costs			
England & Wales		EU Directive 2002/91/EC	

Environmental Impact (CO ₂) Rating		Current	Potential
Very environmentally friendly - lower CO ₂ emissions			
(92 plus) A			
(81-91) B			
(69-80) C			
(55-68) D			
(39-54) E			
(21-38) F			
(1-20) G			
Not environmentally friendly - higher CO ₂ emissions			
England & Wales		EU Directive 2002/91/EC	

