



JAMES
ANDERSON



TO LET

Castelnau, London, SW13

£2,400 Per Month

Per Month

This charming and larger than average conversion apartment is located in a very impressive building on the popular Castelnau. The bright and spacious living room leads on to a fantastic kitchen / diner with views and private patio. There are two large double bedrooms with plenty of storage and a modern bathroom. This apartment is conveniently placed for the amenities of Barnes and Hammersmith. For the commuter Hammersmith's underground and overground network is also a short walk over the bridge. Further benefits include off street parking and an external storage unit which would be ideal for bikes or buggies.



Two Double Bedrooms



Modern Bathroom



Spacious Reception Room



Stunning Kitchen



EPC D / Council Tax D / Deposit £2,769.23



Hammersmith Tube



Outstanding Local Schools



Barnes Village



Private Patio

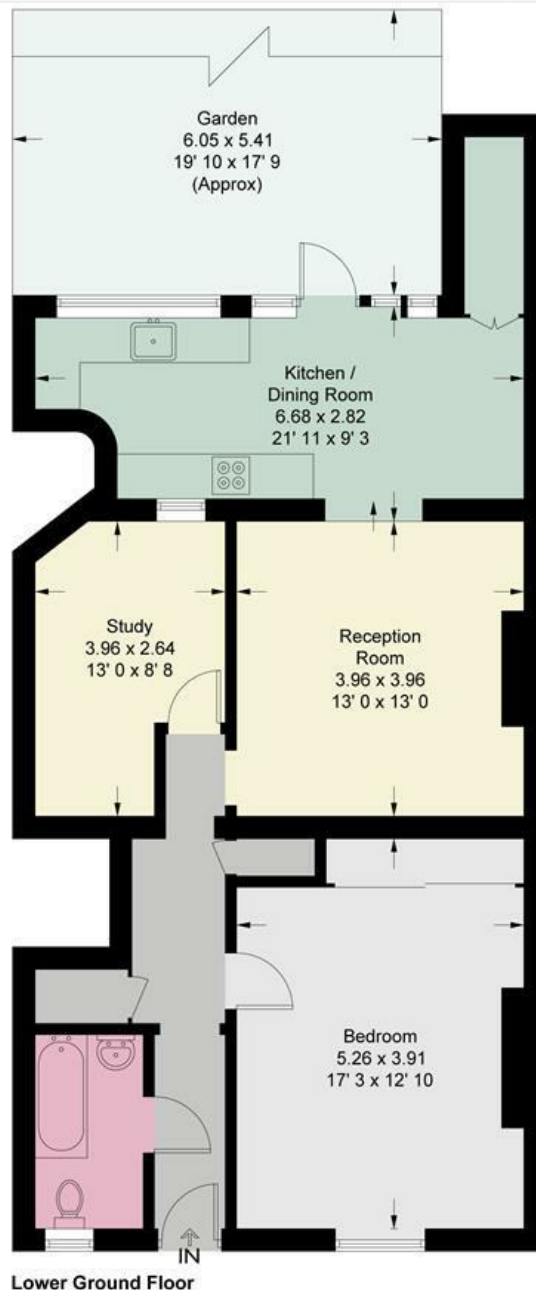


Minimum Term 12 Months / Holding Deposit £553.84



OPEN 7 DAYS A WEEK • Weekdays until 9pm • Weekends until 5pm

0208 878 8688



Lower Ground Floor

This plan is not to scale and must be used as layout guidance only. All measurements and areas are approximate and should not be relied upon to provide accurate information. This plan must not be relied upon when making property valuations, design considerations or any other such relevant decisions. We accept no responsibility or liability (whether in contract, tort or otherwise) in relation to any loss whatsoever arising from or in connection with any use of this plan or the adequacy, accuracy or completeness of it or any information within it.



| Energy Efficiency Rating | | |
|---|-------------------------|-----------|
| | Current | Potential |
| Very energy efficient - lower running costs | | |
| (92 plus) A | | |
| (81-91) B | | |
| (69-80) C | | |
| (55-68) D | | |
| (39-54) E | | |
| (21-38) F | | |
| (1-20) G | | |
| Not energy efficient - higher running costs | | |
| | 65 | 72 |
| England & Wales | EU Directive 2002/91/EC | |

| Environmental Impact (CO ₂) Rating | | |
|---|-------------------------|-----------|
| | Current | Potential |
| Very environmentally friendly - lower CO ₂ emissions | | |
| (92 plus) A | | |
| (81-91) B | | |
| (69-80) C | | |
| (55-68) D | | |
| (39-54) E | | |
| (21-38) F | | |
| (1-20) G | | |
| Not environmentally friendly - higher CO ₂ emissions | | |
| | | |
| England & Wales | EU Directive 2002/91/EC | |

