



**JAMES
ANDERSON**



TO LET

Horne Way, Putney, SW15

£2,400 Per Month

Per Month

Lovely three double bedroom flat to rent in a great location in West Putney. The property comprises a large bright reception room with a modern open plan kitchen, three double bedrooms and a modern family bathroom. Horne Way is located just off the Lower Richmond Road in West Putney which offer a variety of bars and restaurants and easy access to Putney Bridge tube station, Barnes train station and Barnes Common.



Three Double Bedrooms



Modern Bathroom



Large Reception Room



Open Plan Kitchen



EPC Rating C / Council Tax Band C / Holding Deposit £553.84



Putney Train Station



Hotham Primary



River Thames



Available July

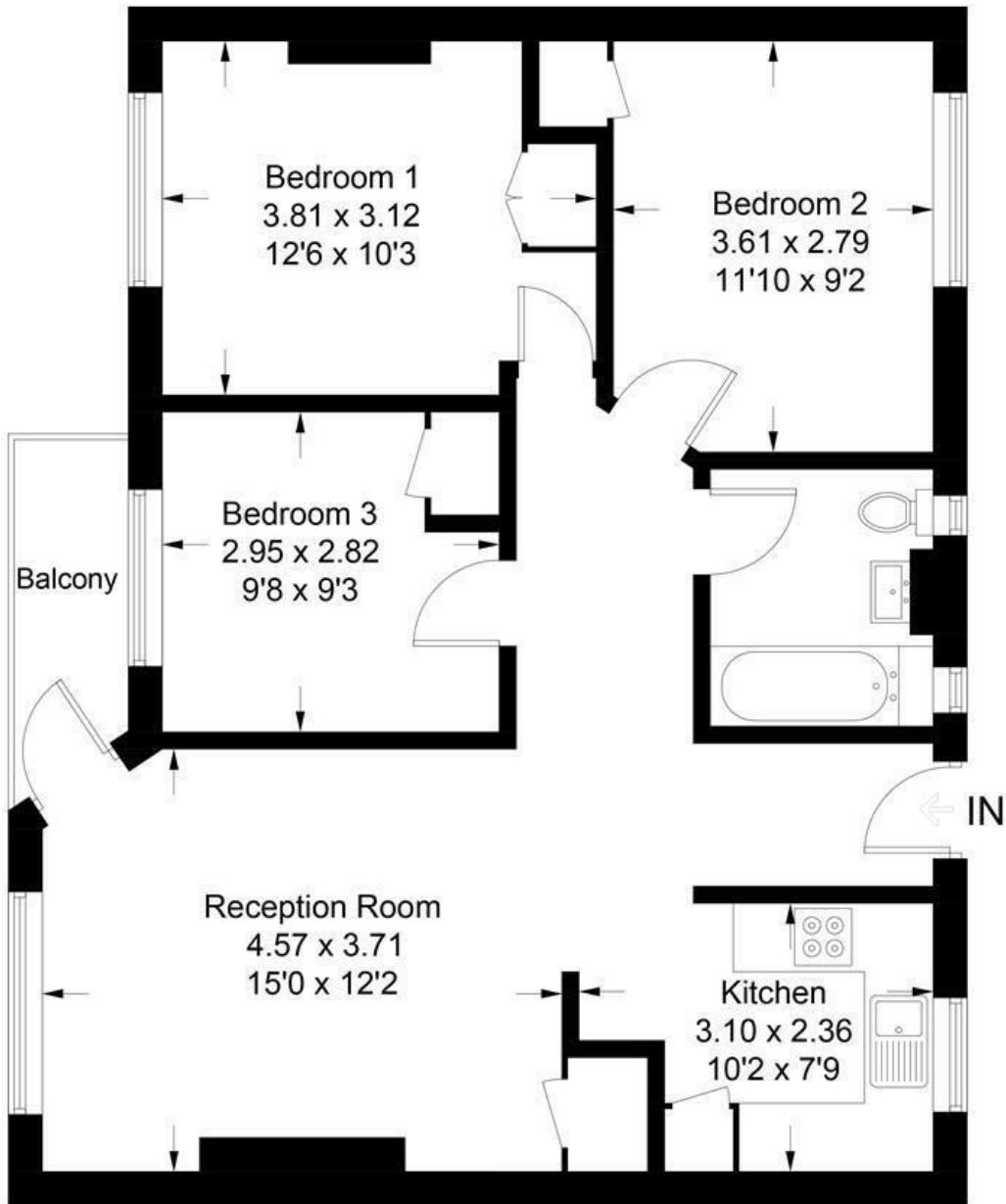


Minimum Term 12 Months / Deposit £2769.23



Huntingford House, SW15

Approximate Gross Internal Area Total = 70.6 sq m / 760 sq ft



First Floor

Illustration for identification purposes only, measurements are approximate, not to scale. FloorplansUsketch.com © 2017 (ID399071)

Energy Efficiency Rating		
	Current	Potential
<i>Very energy efficient - lower running costs</i>		
(92 plus) A		
(81-91) B		
(69-80) C		
(55-68) D		
(39-54) E		
(21-38) F		
(1-20) G		
<i>Not energy efficient - higher running costs</i>		
England & Wales	EU Directive 2002/91/EC	

Environmental Impact (CO ₂) Rating		
	Current	Potential
<i>Very environmentally friendly - lower CO2 emissions</i>		
(92 plus) A		
(81-91) B		
(69-80) C		
(55-68) D		
(39-54) E		
(21-38) F		
(1-20) G		
<i>Not environmentally friendly - higher CO2 emissions</i>		
England & Wales	EU Directive 2002/91/EC	

