



**JAMES  
ANDERSON**

Sheen Lane  
London SW14  
£3,150,000



## Sheen Lane London SW14

A beautifully presented and substantial detached family house with accommodation measuring in excess of 3,900 sq ft situated in this most prestigious location moments from Richmond Park whilst also being within a ten minutes walk of all the amenities the area has to offer. The property is set on a bold corner plot with a west facing garden and off street parking.



















# Sheen Lane

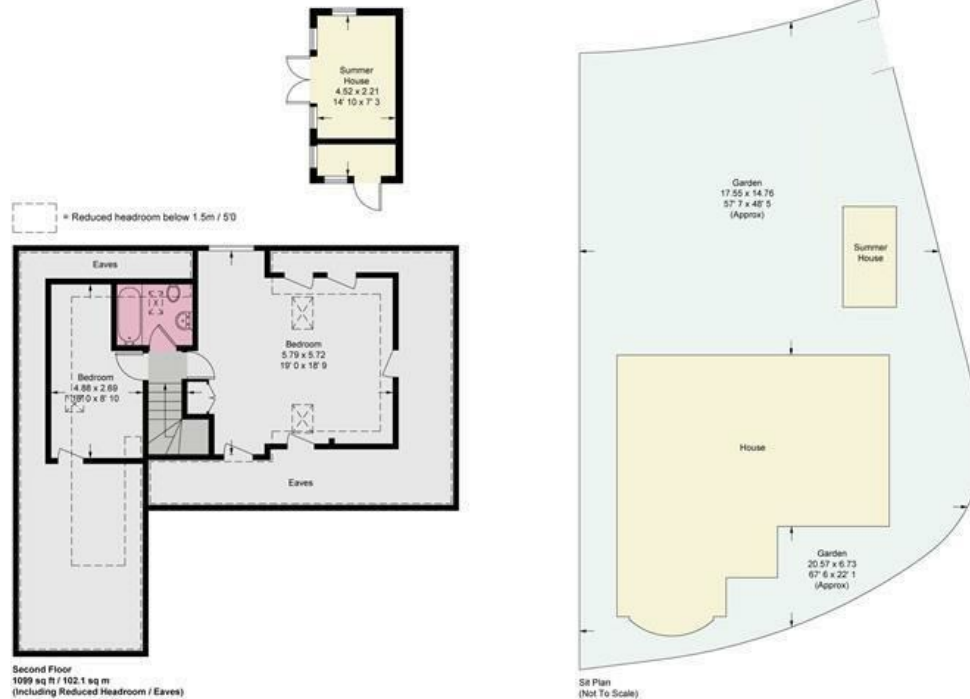
Approximate Gross Internal Area = 3983 sq ft / 370.1 sq m  
(Excluding Reduced Headroom)

Reduced Headroom = 587 sq ft / 54.5 sq m

Summer House = 107 sq ft / 10 sq m



JAMES ANDERSON



JAMES ANDERSON

This plan is not to scale and must be used as layout guidance only. All measurements and areas are approximate and should not be relied upon to provide accurate information. This plan must not be relied upon when making property valuations, design considerations or any other such relevant decisions. We accept no responsibility or liability (whether in contract, tort or otherwise) in relation to any loss whatsoever arising from or in connection with any use of this plan or the adequacy, accuracy or completeness of it or any information within it.





363 Upper Richmond Road West  
East Sheen  
SW14 7NX

020 8876 6611  
sales@jasheen.co.uk  
www.jamesanderson.co.uk

