



**JAMES
ANDERSON**



TO LET

Bemish Road, London, SW15

£2,500 Per Month

Per Month

A beautifully presented two bedroom first floor apartment located in the heart of West Putney.

The accommodation comprises a large open plan living space, the kitchen is finished to a high specification complete with integrated appliances. There are two double bedrooms providing plenty of natural light and a lovely shower room.

The property is located on Bemish Road which is just off the Lower Richmond Road where there are a number of lovely restaurants and bars, close to Putney Common. Putney Bridge Underground Station is within walking distance, as is Putney main Line Station. The 22 bus to Piccadilly Circus/Knightsbridge and the Kings Road stops at the end of Stanbridge Road, and the River Taxi from Putney Pier to the City is only a short walk from this lovely apartment.



Two Double Bedrooms



Modern Shower Room



Open Plan Reception Room



Beautiful Fitted Kitchen, Integrated Appliances



EPC Rating B / Holding Deposit £552.69



Fantastic Transport Links Close By



Outstanding Local School Catchment



Quiet Location



Communal Garden

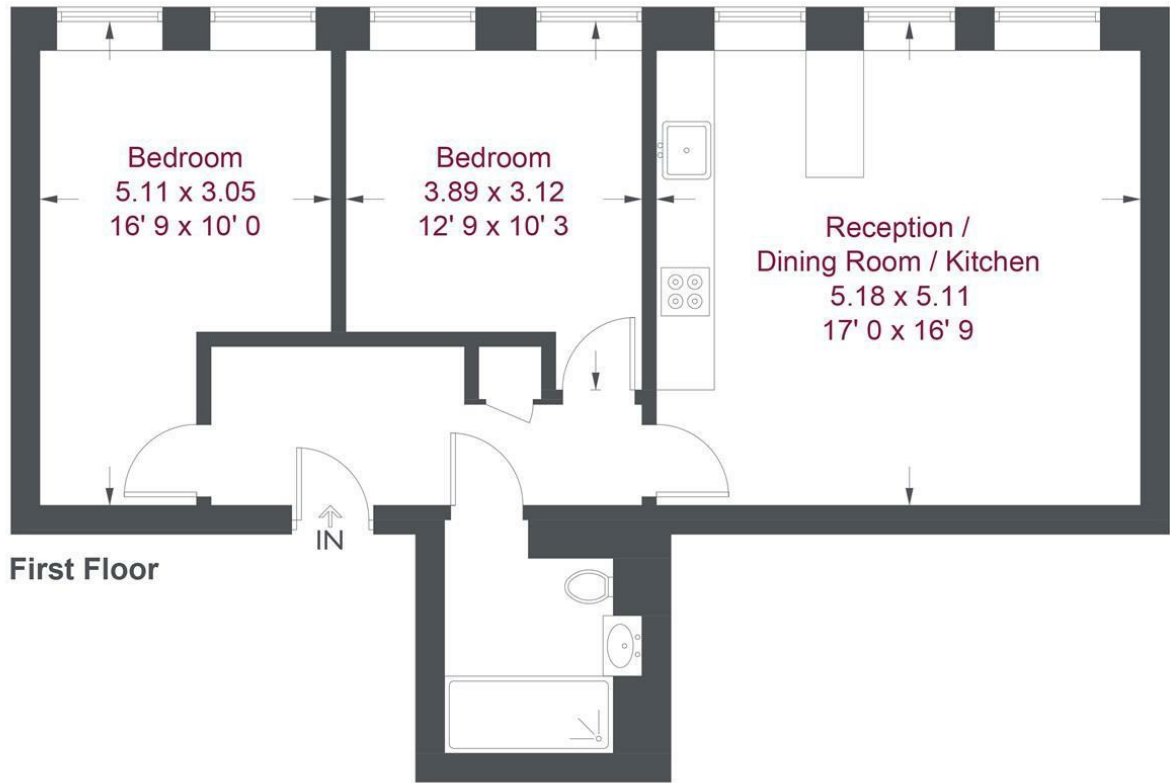


Minimum Term 12 months / Deposit £2763.46



OPEN 7 DAYS A WEEK • Weekdays until 9pm • Weekends until 5pm

0208 785 4400



Bemish Road

Approximate Gross Internal Area = 660 sq ft / 61.3 sq m

Not to scale, for guidance only and must not be relied upon as a statement of fact
All measurements and areas are approximate only and have been prepared in accordance with the current edition of the RICS Code of Measuring Practice

Energy Efficiency Rating		Current	Potential
Very energy efficient - lower running costs			
(92 plus) A			
(81-91) B			
(69-80) C			
(55-68) D			
(39-54) E			
(21-38) F			
(1-20) G			
Not energy efficient - higher running costs			
England & Wales	EU Directive 2002/91/EC	83	83

Environmental Impact (CO ₂) Rating		Current	Potential
Very environmentally friendly - lower CO ₂ emissions			
(92 plus) A			
(81-91) B		90	90
(69-80) C			
(55-68) D			
(39-54) E			
(21-38) F			
(1-20) G			
Not environmentally friendly - higher CO ₂ emissions			
England & Wales	EU Directive 2002/91/EC	90	90

