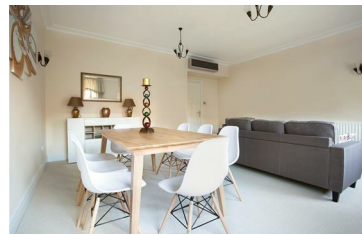




**JAMES
ANDERSON**



TO LET

£2,500 Per Month

Richard Burbidge Mansions, Barnes, SW13

Per Month

An impressive one double bedroom apartment situated in the sought after Harrods Village. This gated development is positioned within walking distance of Hammersmith Bridge and offers video security entry system, on site gym and swimming pool as well as secure off street parking. Internally, the apartment is flooded with natural light and offers an extremely spacious living room with entertaining space, a fully fitted kitchen with modern appliances, guest toilet and large storage cupboard. The generous double bedroom benefits from ample built in wardrobes and a fully tiled modern bathroom which boasts a separate shower and bath.



One Bedroom Apartment



Modern Bathroom



Spacious Reception



High End Kitchen



EPC Rating C/Council Tax Band E/Holding Deposit £484.62



Close to Hammersmith Tube



Close To St Pauls School



Off-Street Parking



24 Hour Concierge

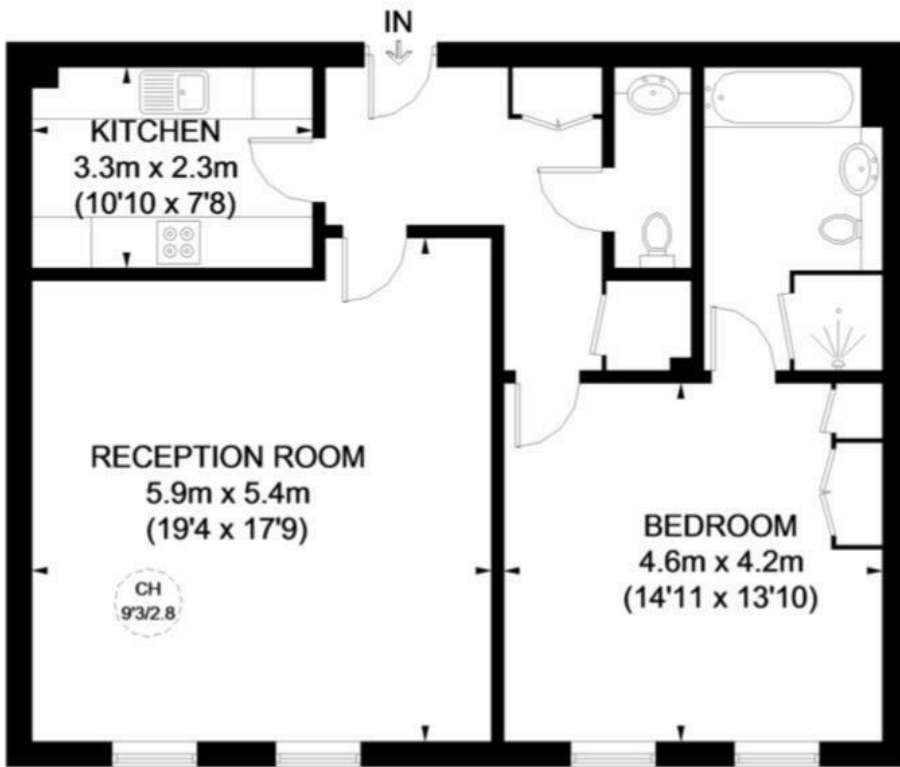


Minimum Term 12 Months/Deposit £2,423.07



OPEN 7 DAYS A WEEK • Weekdays until 9pm • Weekends until 5pm

0208 878 8688



RICHARD BURBIDGE MANSIONS



APPROXIMATE GROSS INTERNAL AREA
851 SQ. FT. (79.1 SQ. M.)

SECOND FLOOR

This plan is for layout guidance only. Not drawn to scale unless stated. Windows and door openings are approximate. Whilst every care is taken in the preparation of this plan, please check all dimensions, shapes and compass bearings before making any decisions reliant upon them. Please be advised that Hamptons International / our agents have not seen or reviewed any building regulations or planning permission in relation to works carried out to the property (ID211161)

Energy Efficiency Rating		
	Current	Potential
<i>Very energy efficient - lower running costs</i>		
(92 plus) A		
(81-91) B		
(69-80) C		
(55-68) D		
(39-54) E		
(21-38) F		
(1-20) G		
<i>Not energy efficient - higher running costs</i>		
England & Wales	EU Directive 2002/91/EC	

Environmental Impact (CO ₂) Rating		
	Current	Potential
<i>Very environmentally friendly - lower CO2 emissions</i>		
(92 plus) A		
(81-91) B		
(69-80) C		
(55-68) D		
(39-54) E		
(21-38) F		
(1-20) G		
<i>Not environmentally friendly - higher CO2 emissions</i>		
England & Wales	EU Directive 2002/91/EC	

