



JAMES  
ANDERSON

Castelnau  
Barnes SW13







JAMES  
ANDERSON

## Castelnau Barnes SW13

This first floor apartment offers a nice modern family bathroom, recently installed carpets throughout and the property has recently been re-painted. Located in the popular North Barnes, moments away from Hammersmith Bridge and the 209 bus stop which takes you into the village. This bright and airy apartment comprises of a spacious family kitchen, two double bedrooms and one slightly smaller bedroom plus a modern bathroom. This property further benefits from a private decked terrace.



Three Bedrooms



Modern Bathroom



Spacious Reception



Large Kitchen



EPC Rating D/ Council Tax D/ Deposit  
£2,596.15



Hammersmith Tube Station



St Pauls School



Excellent Transport Links



Private Roof Terrace



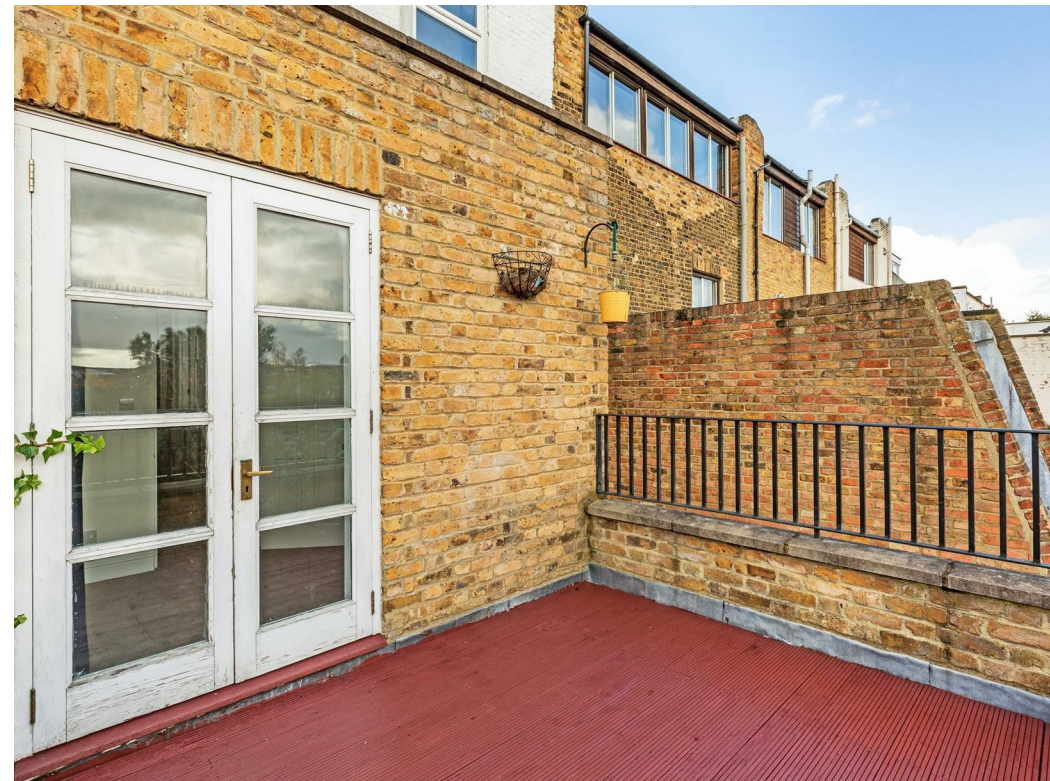
12 Month Minimum Term / Holding Deposit  
£519.23



























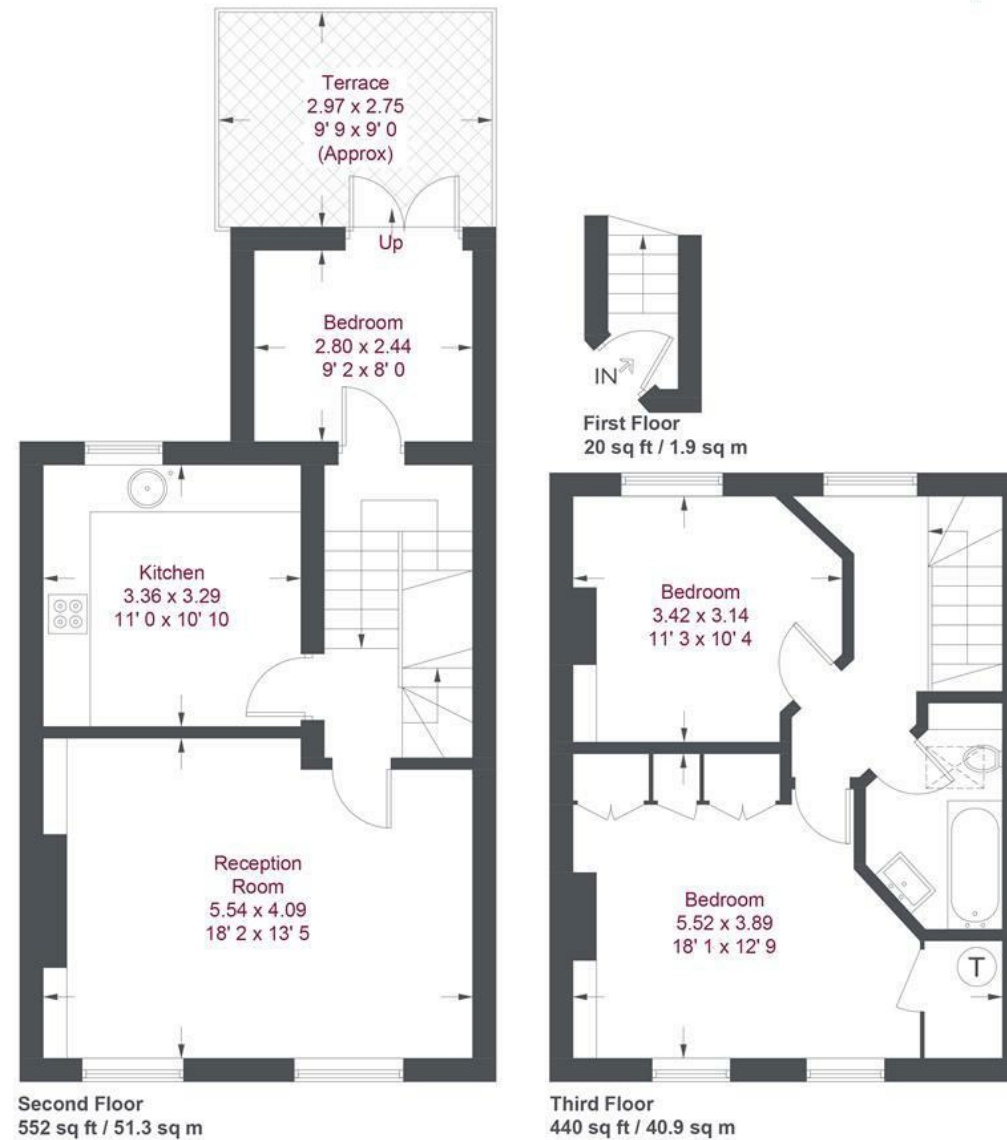












## Castelneau

Approximate Gross Internal Area = 1012 sq ft / 94.1 sq m

Not to scale, for guidance only and must not be relied upon as a statement of fact  
All measurements and areas are approximate only and have been prepared in  
accordance with the current edition of the RICS Code of Measuring Practice





JAMES  
ANDERSON

65 Barnes High Street  
Barnes  
SW13 9LD

0208 878 8688  
barnes2@jamesanderson.co.uk  
www.jamesanderson.co.uk

Energy Efficiency Rating		
	Current	Potential
Very energy efficient - lower running costs		
(92 plus) <b>A</b>		
(81-91) <b>B</b>		
(69-80) <b>C</b>		
(55-68) <b>D</b>		
(39-54) <b>E</b>		
(21-38) <b>F</b>		
(1-20) <b>G</b>		
Not energy efficient - higher running costs		
England & Wales		
EU Directive 2002/91/EC		

Environmental Impact (CO <sub>2</sub> ) Rating		
	Current	Potential
Very environmentally friendly - lower CO <sub>2</sub> emissions		
(92 plus) <b>A</b>		
(81-91) <b>B</b>		
(69-80) <b>C</b>		
(55-68) <b>D</b>		
(39-54) <b>E</b>		
(21-38) <b>F</b>		
(1-20) <b>G</b>		
Not environmentally friendly - higher CO <sub>2</sub> emissions		
England & Wales		
EU Directive 2002/91/EC		

