



JAMES
ANDERSON



TO LET

Chiswick Village, Chiswick, W4

£1,900 Per Month

Per Month

Bright and spacious two bedroom apartment situated 0.3 miles from Gunnersbury Station. Set within a popular development, this flat boasts two spacious bedrooms, a fully fitted kitchen, contemporary bathroom and bright reception room with views over the green. There are substantial communal gardens surrounding the property and Kew Bridge Station is also only 0.5 miles from the property.



Two Double Bedrooms



Modern Bathroom



Unfurnished



Modern Kitchen



EPC D/Council Tax Band C/Deposit £2,134.61



Gunnersbury Station/Kew Bridge Station



Excellent Local Schools



Easy Access To River Thames



Heating and Hot Water Included

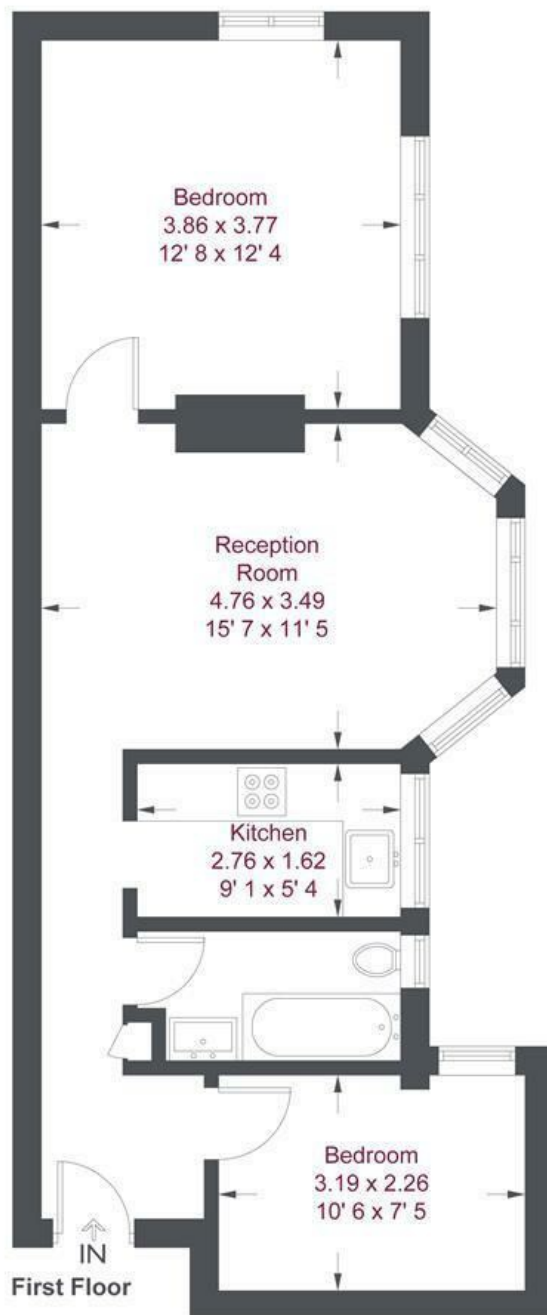


Minimum Term 12 Months/Holding Deposit £426.92



OPEN 7 DAYS A WEEK • Weekdays until 9pm • Weekends until 5pm


0208 876 6611



Chiswick Village

Approximate Gross Internal Area = 572 sq ft / 53.2 sq m

This plan is not to scale and must be used as layout guidance only. All measurements and areas are approximate and should not be relied upon to provide accurate information. This plan must not be relied upon when making property valuations, design considerations or any other such relevant decisions. We accept no responsibility or liability (whether in contract, tort or otherwise) in relation to any loss whatsoever arising from or in connection with any use of this plan or the adequacy, accuracy or completeness of it or any information within it.

Energy Efficiency Rating		
	Current	Potential
Very energy efficient - lower running costs		
(92 plus) A		
(81-91) B		
(69-80) C		
(55-68) D		
(39-54) E		
(21-38) F		
(1-20) G		
Not energy efficient - higher running costs		
England & Wales	EU Directive 2002/91/EC 	

Environmental Impact (CO ₂) Rating		
	Current	Potential
Very environmentally friendly - lower CO ₂ emissions		
(92 plus) A		
(81-91) B		
(69-80) C		
(55-68) D		
(39-54) E		
(21-38) F		
(1-20) G		
Not environmentally friendly - higher CO ₂ emissions		
England & Wales	EU Directive 2002/91/EC 