



**JAMES  
ANDERSON**



## TO LET

Ashleigh Road, Mortlake, SW14

**£1,995 Per Month**

Per Month

A stunning two bedroom ground floor apartment with wooden floors and a private garden in the popular Ashleigh Road. The property offers an entrance hall, two double bedrooms, tiled bathroom with an overhead shower, separate living room, modern kitchen and direct access to an easy to maintain private garden. Ashleigh Road is close to excellent public transport links with Mortlake Station just a short walk away and a great bus service to Hammersmith Bridge.



Two Double Bedrooms



Contemporary Bathroom



Stunning Kitchen



Bright Reception Room



EPC Rating D



Barnes Bridge Station



Thomson House Primary School



River Thames



Private Garden



Wood Flooring

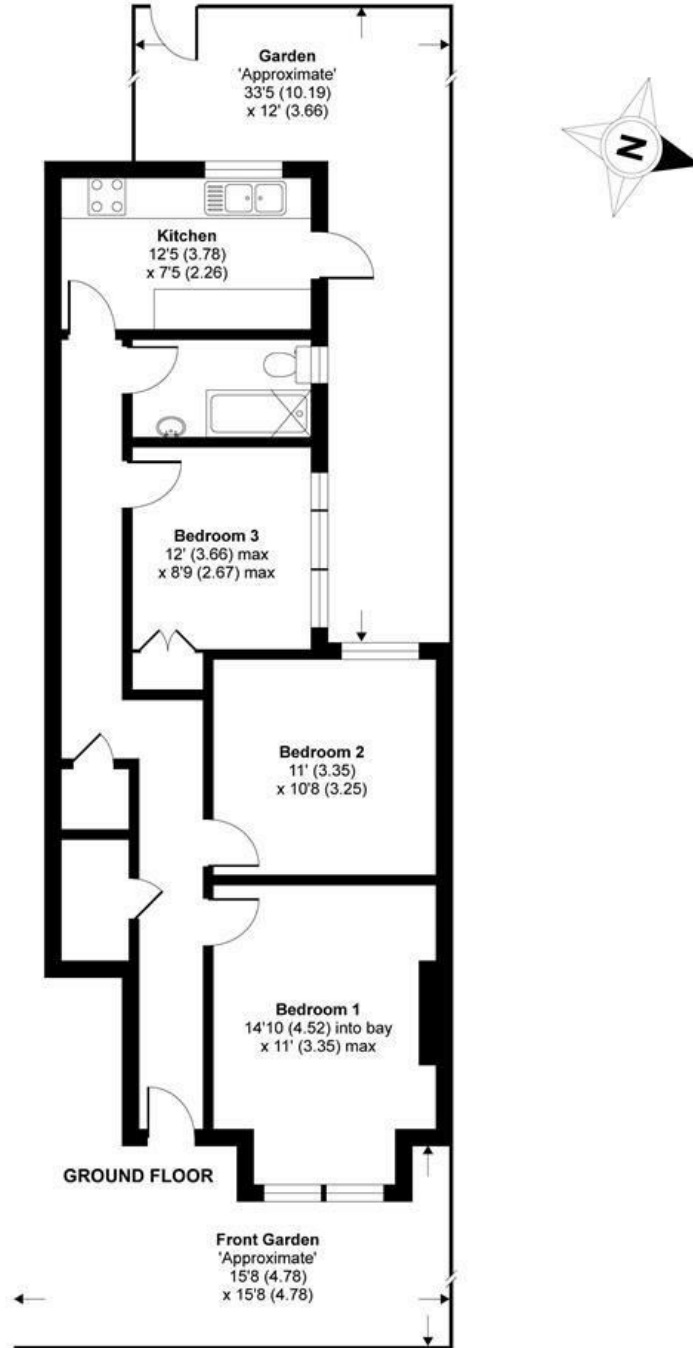


OPEN 7 DAYS A WEEK • Weekdays until 9pm • Weekends until 5pm

0208 878 8688

# Ashleigh Road, London, SW14

APPROX. GROSS INTERNAL FLOOR AREA 710 SQ FT 65.9 SQ METRES



Whilst every attempt has been made to ensure the accuracy of the floor plan contained here, measurements of doors, windows and rooms are approximate and no responsibility is taken for any error, omission or misstatement. These plans are for representation purposes only as defined by RICS Code of Measuring Practice and should be used as such by any prospective purchaser. Specifically no guarantee is given on the total square footage of the property if quoted on this plan. Any figure given is for initial guidance only and should not be relied on as a basis of valuation.

Copyright nichecom.co.uk 2016 Produced for James Anderson REF : 105359

| Energy Efficiency Rating                    |                         | Current | Potential |
|---|-------------------------|---------|-----------|
| Very energy efficient - lower running costs |                         |         |           |
| (92 plus) <b>A</b>                          |                         |         |           |
| (81-91) <b>B</b>                            |                         |         |           |
| (69-80) <b>C</b>                            |                         |         |           |
| (55-68) <b>D</b>                            |                         |         |           |
| (39-54) <b>E</b>                            |                         |         |           |
| (21-38) <b>F</b>                            |                         |         |           |
| (1-20) <b>G</b>                             |                         |         |           |
| Not energy efficient - higher running costs |                         |         |           |
| <b>England &amp; Wales</b>                  | EU Directive 2002/91/EC |         |           |

| Environmental Impact (CO <sub>2</sub> ) Rating                  |                         | Current | Potential |
|---|-------------------------|---------|-----------|
| Very environmentally friendly - lower CO <sub>2</sub> emissions |                         |         |           |
| (92 plus) <b>A</b>  |                         |         |           |
| (81-91) <b>B</b>  |                         |         |           |
| (69-80) <b>C</b>  |                         |         |           |
| (55-68) <b>D</b>  |                         |         |           |
| (39-54) <b>E</b>  |                         |         |           |
| (21-38) <b>F</b>  |                         |         |           |
| (1-20) <b>G</b>   |                         |         |           |
| Not environmentally friendly - higher CO <sub>2</sub> emissions |                         |         |           |
| <b>England &amp; Wales</b>                                      | EU Directive 2002/91/EC |         |           |

