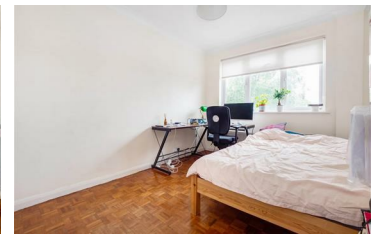




**JAMES
ANDERSON**



TO LET

Somerset Lodge, London, SW15

£1,900 Per Month

Per Month

A wonderful two double bed roomed apartment offering well presented living space set within a sought after development off Upper Richmond Road.

Somerset Lodge is located on the second floor and comprises a large reception room with parque flooring, modern kitchen, two good-sized bedrooms and nutrual bathroom. This property measures 890 Sq Ft and also benefits from a private garage.

The property is situated within easy reach of a range of amenities, with a further selection of shops, bars and restaurants close by on Putney High Street. Transport links include Putney (National Rail) and East Putney (District Line) stations

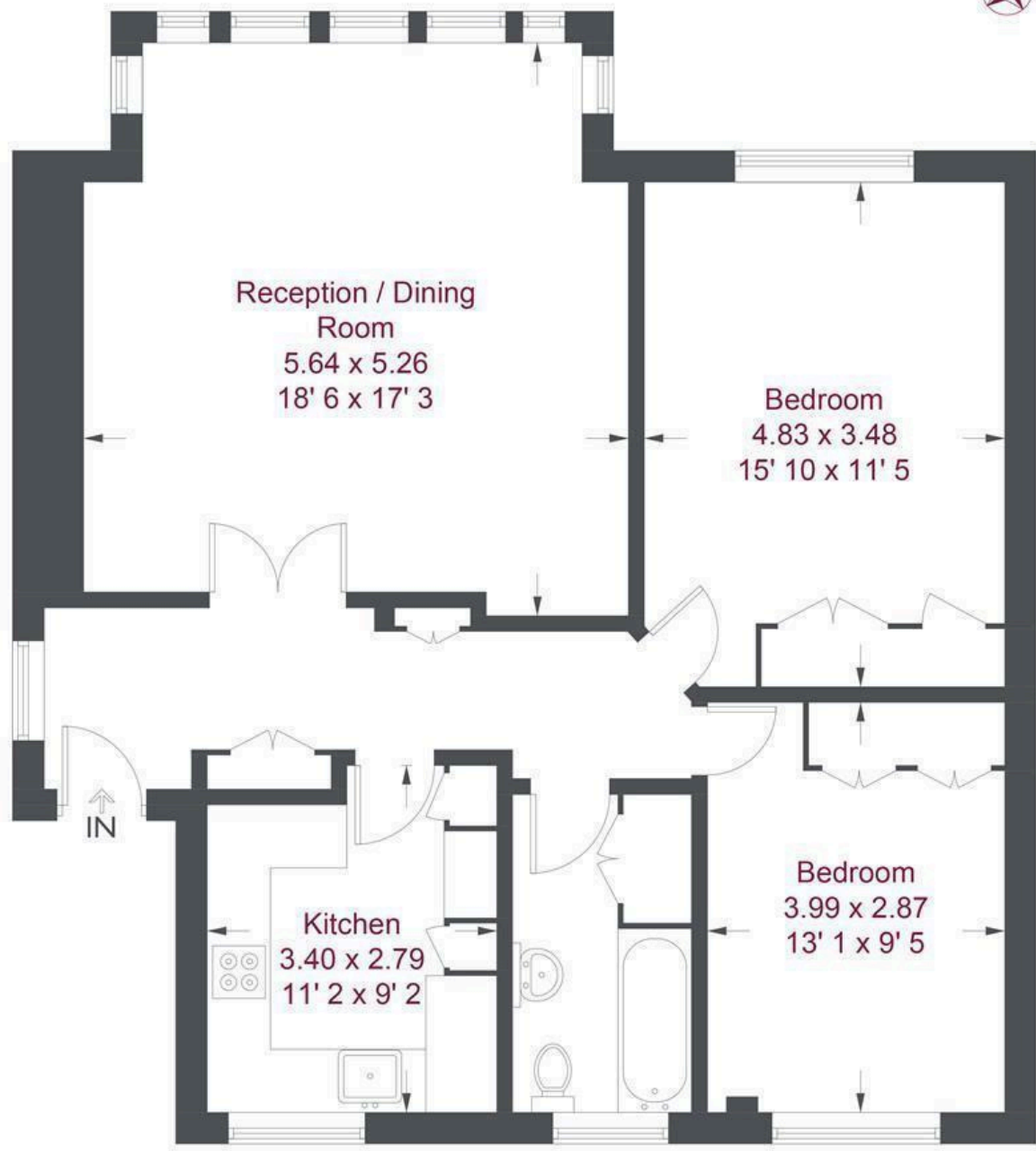
EPC rating - D
Council tax band - E

-  Two double Bedrooms
-  Putney Train Station
-  Family Bathroom
-  Falcon Girls School
-  Large Reception Room
-  Great Location
-  Good Sized Kitchen
-  Furnished
-  EPC Rating D / Council Tax Band E / Holding Deposit £438.46
-  Available September



OPEN 7 DAYS A WEEK • Weekdays until 9pm • Weekends until 5pm

0208 785 4400



Second Floor

Somerset Lodge

Approximate Gross Internal Area = 890 sq ft / 82.7 sq m

Not to scale, for guidance only and must not be relied upon as a statement of fact
 All measurements and areas are approximate only and have been prepared in accordance with the current edition of the RICS Code of Measuring Practice

Energy Efficiency Rating		
	Current	Potential
<i>Very energy efficient - lower running costs</i>		
(92 plus) A		
(81-91) B		
(69-80) C		
(55-68) D		
(39-54) E		
(21-38) F		
(1-20) G		
<i>Not energy efficient - higher running costs</i>		
England & Wales	EU Directive 2002/91/EC	

Environmental Impact (CO ₂) Rating		
	Current	Potential
<i>Very environmentally friendly - lower CO2 emissions</i>		
(92 plus) A		
(81-91) B		
(69-80) C		
(55-68) D		
(39-54) E		
(21-38) F		
(1-20) G		
<i>Not environmentally friendly - higher CO2 emissions</i>		
England & Wales	EU Directive 2002/91/EC	

