



**JAMES
ANDERSON**



TO LET

Rosemary Gardens, Mortlake, SW14

£1,900 Per Month

Per Month

A well presented top floor apartment comprising of two bedrooms, large reception room, fully equipped kitchen and modern bathroom. The property also benefits from communal gardens and off street parking. The property is within extremely close proximity to shops, cafes and supermarkets of East Sheen town centre. Richmond Park is nearby and the banks of the River Thames are moments away. Mortlake Station (22 mins to Waterloo) is easily accessible and by road there are quick links to the South Circular and M3/M4 motorways.



Two Bedrooms



One Bathroom



Unfurnished



Fitted Modern Kitchen



EPC D | Council Tax Band C



Mortlake Station



Thomson House Primary School



Moments to Mortlake Green



Communal Gardens & Residents Parking



Deposit Required £2,192.30 | Holding Deposit £438.46

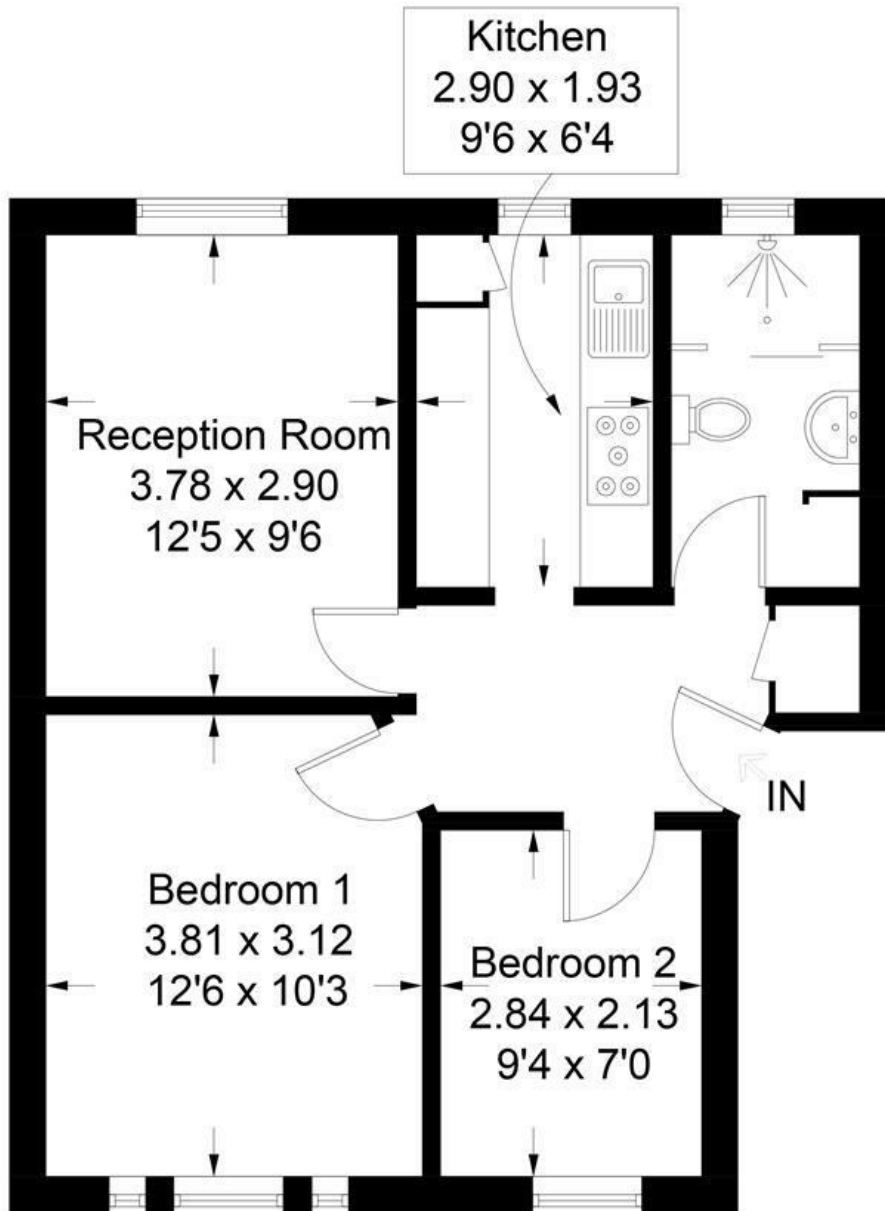


OPEN 7 DAYS A WEEK • Weekdays until 9pm • Weekends until 5pm

0208 876 6611

Rosemary Gardens, SW14

Approximate Gross Internal Area = 47.2 sq m / 508 sq ft



Third Floor

Illustration for identification purposes only, measurements are approximate, not to scale. FloorplansUsketch.com © 2018 (ID 457265)

| Energy Efficiency Rating | | |
|---|-------------------------|-----------|
| | Current | Potential |
| Very energy efficient - lower running costs | | |
| (92 plus) A | | |
| (81-91) B | | |
| (69-80) C | | |
| (55-68) D | | |
| (39-54) E | | |
| (21-38) F | | |
| (1-20) G | | |
| Not energy efficient - higher running costs | | |
| | 55 | 78 |
| England & Wales | EU Directive 2002/91/EC | |

| Environmental Impact (CO ₂) Rating | | |
|---|-------------------------|-----------|
| | Current | Potential |
| Very environmentally friendly - lower CO ₂ emissions | | |
| (92 plus) A | | |
| (81-91) B | | |
| (69-80) C | | |
| (55-68) D | | |
| (39-54) E | | |
| (21-38) F | | |
| (1-20) G | | |
| Not environmentally friendly - higher CO ₂ emissions | | |
| | | |
| England & Wales | EU Directive 2002/91/EC | |

