



**JAMES
ANDERSON**



TO LET

15 Broomhill Road, London, SW18





£1,350 Per Month






Per Month

Lovely ground floor studio apartment with private patio and off street parking. The property comprise a large studio room with doors out to a private patio, and lovely modern bathroom and separate kitchen. The property also comes with allocated off street parking.

Broomhill Road is located within easy reach of Wandsworth Town, Southside shopping & King George's Park and Southfields tube.

Deposit Required £1557
Minimum Term: 12 months
Holding Deposit: £311.40

-  Large Studio Room
-  Modern Bathroom
-  Private Patio
-  Modern Kitchen
-  EPC Rating - C

-  Wandsworth Town
-  Putney High
-  Furnished
-  Off Street Parking
-  Council Tax Band B - £679 per annum



OPEN 7 DAYS A WEEK • Weekdays until 9pm • Weekends until 5pm

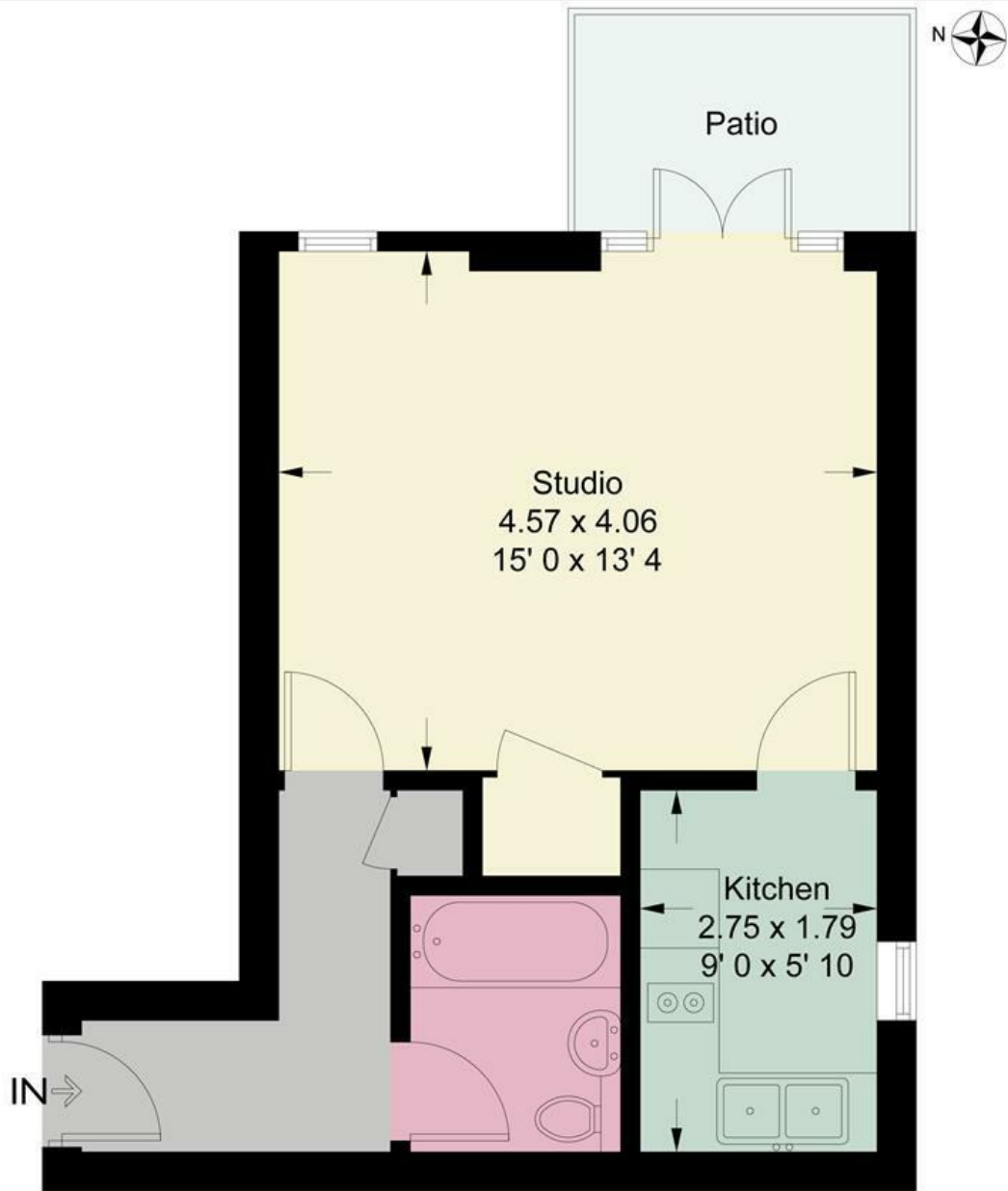
0208 785 4400

Parkview Court

Approximate Gross Internal Area = 351 sq ft / 32.6 sq m



**JAMES
ANDERSON**



Ground Floor

This plan is not to scale and must be used as layout guidance only. All measurements and areas are approximate and should not be relied upon to provide accurate information. This plan must not be relied upon when making property valuations, design considerations or any other such relevant decisions. We accept no responsibility or liability (whether in contract, tort or otherwise) in relation to any loss whatsoever arising from or in connection with any use of this plan or the adequacy, accuracy or completeness of it or any information within it.



Energy Efficiency Rating		Current	Potential
Very energy efficient - lower running costs			
(92 plus) A			
(81-91) B			
(69-80) C		69	77
(55-68) D			
(39-54) E			
(21-38) F			
(1-20) G			
Not energy efficient - higher running costs			
England & Wales	EU Directive 2002/91/EC		

Environmental Impact (CO ₂) Rating		Current	Potential
Very environmentally friendly - lower CO ₂ emissions			
(92 plus) A			
(81-91) B			
(69-80) C		69	77
(55-68) D			
(39-54) E			
(21-38) F			
(1-20) G			
Not environmentally friendly - higher CO ₂ emissions			
England & Wales	EU Directive 2002/91/EC		

