



JAMES
ANDERSON



TO LET

Ferry Road, Barnes, SW13

£6,500 Per Month

Per Month

A spacious Semi Detached family house with a good size garden and off street parking, well located for the shops and boutiques of Barnes Village. This Property boasts an bright Open plan kitchen/Conservatory and dining areas. The top two floors offer four double bedrooms, One with an en-suite bathroom and two separate family bathrooms. There is Plenty of wooden flooring throughout, plus the added benefit of a downstairs WC and a utility room.

There is also a fantastic selection of local nearby schools, including The Harrobian, St Paul's School and The Swedish School as well as excellent public transport links up to Hammersmith, into central London and out to Richmond.



Five Bedroom House



Three Bathrooms



Spacious Reception Rooms



Open Plan Kitchen Diner



EPC Rating C / Council Tax Band G / Deposit £7,500



Barnes Station



Outstanding Local Schools



Village Location



Substantial Family Home



12 Months Minimum Term / Holding Deposit £1,500



OPEN 7 DAYS A WEEK • Weekdays until 9pm • Weekends until 5pm

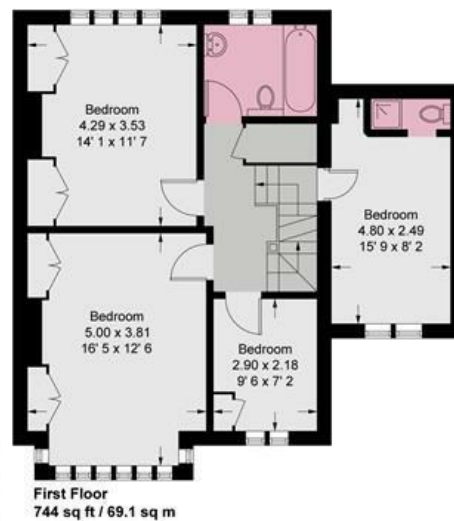
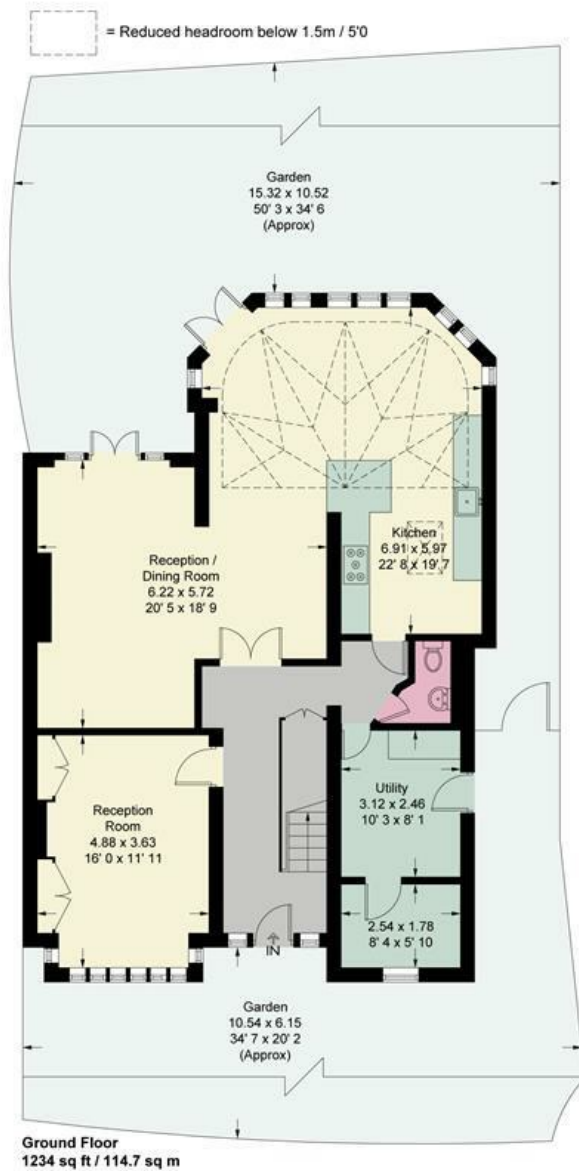
0208 878 8688

Ferry Road

Approximate Gross Internal Area = 2414 sq ft / 224.3 sq m
(Excluding Reduced Headroom / Eaves)
Reduced Headroom / Eaves = 315 sq ft / 29.3 sq m
Total = 2729 sq ft / 253.6 sq m



**JAMES
ANDERSON**



This plan is not to scale and must be used as layout guidance only. All measurements and areas are approximate and should not be relied upon to provide accurate information. This plan must not be relied upon when making property valuations, design considerations or any other such relevant decisions. We accept no responsibility or liability (whether in contract, tort or otherwise) in relation to any loss whatsoever arising from or in connection with any use of this plan or the adequacy, accuracy or completeness of it or any information within it.



Energy Efficiency Rating		
	Current	Potential
Very energy efficient - lower running costs		
(92 plus) A		
(81-91) B		
(69-80) C		
(55-68) D		
(39-54) E		
(21-38) F		
(1-20) G		
Not energy efficient - higher running costs		
England & Wales	EU Directive 2002/91/EC	

Environmental Impact (CO ₂) Rating		
	Current	Potential
Very environmentally friendly - lower CO ₂ emissions		
(92 plus) A		
(81-91) B		
(69-80) C		
(55-68) D		
(39-54) E		
(21-38) F		
(1-20) G		
Not environmentally friendly - higher CO ₂ emissions		
England & Wales	EU Directive 2002/91/EC	

