



**JAMES  
ANDERSON**



# TO LET

Dovecote Gardens, Mortlake, SW14

# £1,650 Per Month

Per Month

A spacious one bedroom first floor apartment located within a desirable development. The property offers one double bedroom with built in wardrobes, a spacious reception room, modern fitted kitchen and bathroom. The property benefits further from allocated off street parking and bike storage. Dovecote Gardens is situated on a residential street and is within very easy reach of Mortlake Station (26 minutes to Waterloo), the River Thames, Richmond Park and the local shopping and amenities of East Sheen and Barnes Village. The 209 and 419 bus routes to Hammersmith Bridge and Richmond are very close by and provide a good service to Hammersmith Tube station and Richmond Town Centre.



One Double Bedroom



Fitted Bathroom



Bright Reception



Modern Kitchen



EPC Rating C | Council Tax D | Holding Deposit £380.76



Mortlake Station



Outstanding Local Schools



River Thames



Bike Storage

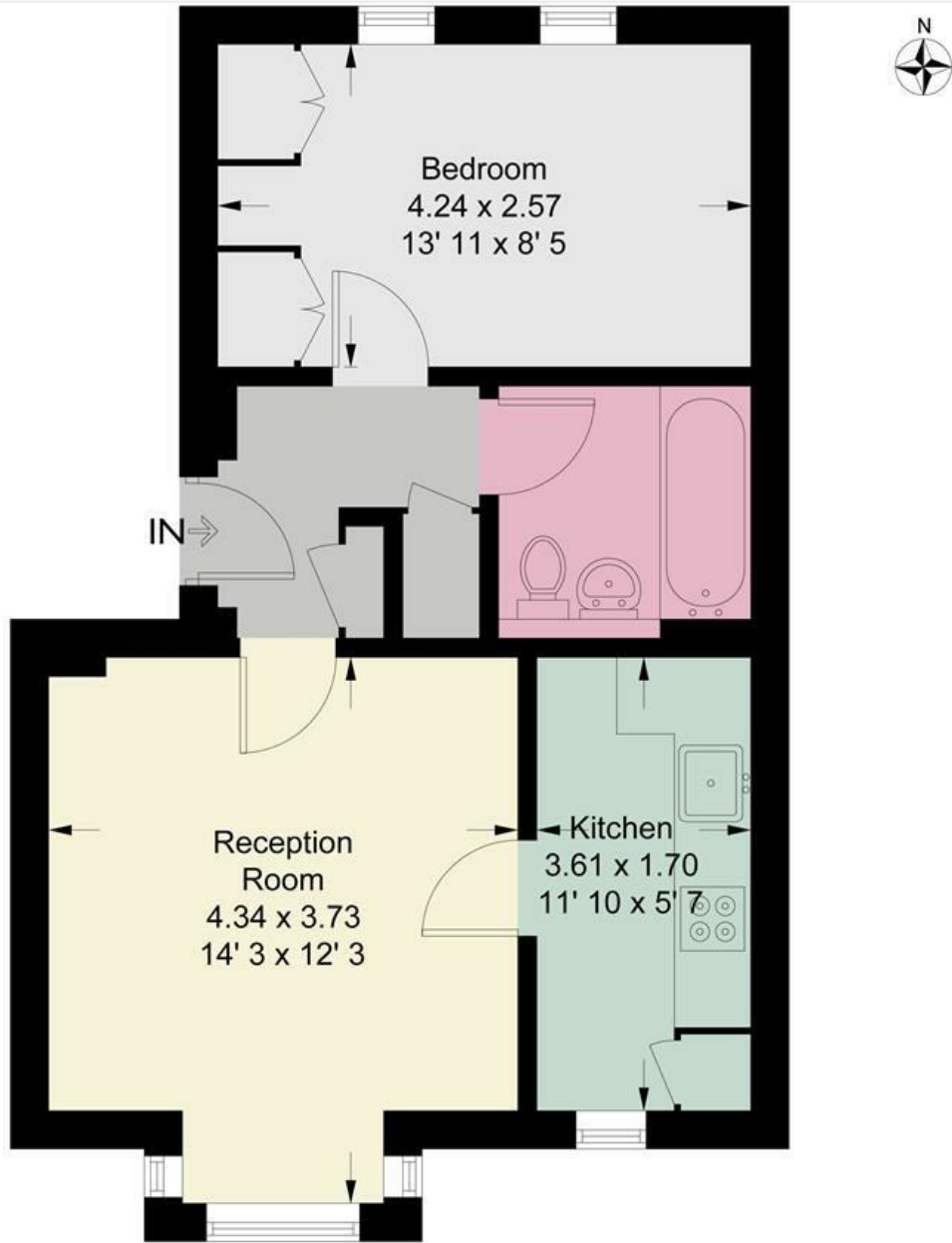


Deposit £1,903.84 | Minimum Term 12 Months



OPEN 7 DAYS A WEEK • Weekdays until 9pm • Weekends until 5pm


0208 878 8688



**First Floor**

This plan is not to scale and must be used as layout guidance only. All measurements and areas are approximate and should not be relied upon to provide accurate information. This plan must not be relied upon when making property valuations, design considerations or any other such relevant decisions. We accept no responsibility or liability (whether in contract, tort or otherwise) in relation to any loss whatsoever arising from or in connection with any use of this plan or the adequacy, accuracy or completeness of it or any information within it.



Energy Efficiency Rating		
	Current	Potential
<i>Very energy efficient - lower running costs</i>		
(92 plus) <b>A</b>		
(81-91) <b>B</b>		
(69-80) <b>C</b>	<b>75</b>	<b>79</b>
(55-68) <b>D</b>		
(39-54) <b>E</b>		
(21-38) <b>F</b>		
(1-20) <b>G</b>		
<i>Not energy efficient - higher running costs</i>		
<b>England &amp; Wales</b>	EU Directive 2002/91/EC	

Environmental Impact (CO <sub>2</sub> ) Rating		
	Current	Potential
<i>Very environmentally friendly - lower CO<sub>2</sub> emissions</i>		
(92 plus) <b>A</b>		
(81-91) <b>B</b>		
(69-80) <b>C</b>	<b>78</b>	<b>83</b>
(55-68) <b>D</b>		
(39-54) <b>E</b>		
(21-38) <b>F</b>		
(1-20) <b>G</b>		
<i>Not environmentally friendly - higher CO<sub>2</sub> emissions</i>		
<b>England &amp; Wales</b>	EU Directive 2002/91/EC	