



**JAMES
ANDERSON**



TO LET

Horne Way, Putney, SW15

£2,000 Per Month

Per Month

A brilliant two double bedroom flat in West Putney close to transport links, Putney Common and all of the Lower Richmond Road's shops, restaurants and bars as well as The River Thames.

The accommodation is beautifully laid out and provides a generous living space. The property is arranged to provide a good size reception room benefiting from a small private terrace with stunning views over the common and towards the city. A modern fitted kitchen, two double bedrooms, a further single room / study and a modern bathroom. It is further complemented by communal gardens, and good storage.



Three Bedrooms



Modern Bathroom



Large Bright Reception



Modern Kitchen



EPC D/ Council Tax Band C /Holding Deposit £461.54



Barnes



Oasis Academy



River Thames



Private Balcony

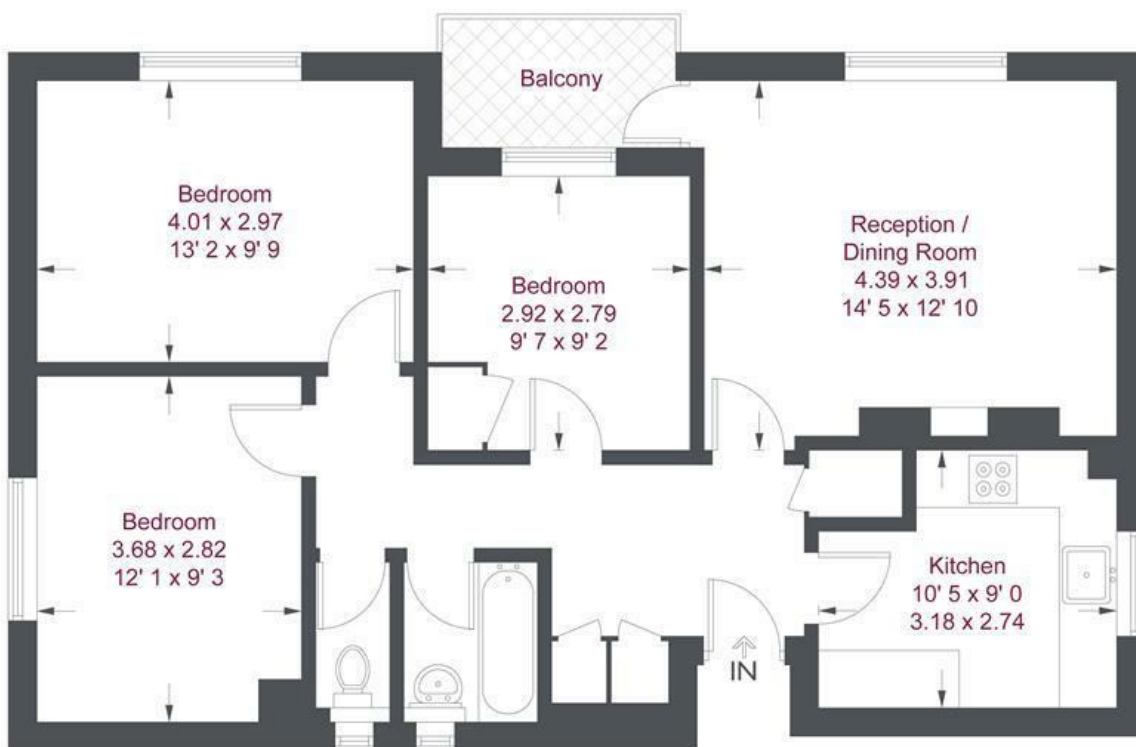


12 Month Minimum Term/ Deposit £2,307.69



OPEN 7 DAYS A WEEK • Weekdays until 9pm • Weekends until 5pm

0208 785 4400



Fourth Floor

Knox House

Approximate Gross Internal Area = 794 sq ft / 73.8 sq m

Not to scale, for guidance only and must not be relied upon as a statement of fact
 All measurements and areas are approximate only and have been prepared in accordance with the current edition of the RICS Code of Measuring Practice

Energy Efficiency Rating		
	Current	Potential
<i>Very energy efficient - lower running costs</i>		
(92 plus) A		
(81-91) B		
(69-80) C		
(55-68) D		
(39-54) E		
(21-38) F		
(1-20) G		
<i>Not energy efficient - higher running costs</i>		
	68	80
England & Wales	EU Directive 2002/91/EC	

Environmental Impact (CO ₂) Rating		
	Current	Potential
<i>Very environmentally friendly - lower CO2 emissions</i>		
(92 plus) A		
(81-91) B		
(69-80) C		
(55-68) D		
(39-54) E		
(21-38) F		
(1-20) G		
<i>Not environmentally friendly - higher CO2 emissions</i>		
England & Wales	EU Directive 2002/91/EC	

