



JAMES
ANDERSON



TO LET

Harvey Court, East Sheen, SW14

£1,650 Per Month

Per Month

A beautifully presented, two bedroom first floor apartment within easy reach of East Sheen town centre. The property comprises of a large reception room, fitted kitchen with appliances, two double bedrooms and modern bathroom. In addition this superb apartment has ample storage, boasts attractive wooden flooring, high ceilings and period features throughout as well as the added bonus of off street parking.



Two Double Bedrooms



One Bathroom



Unfurnished



Galley Kitchen



EPC Rating - B



Close to Public Transport



Sheen Mount Primary School



Close to Richmond



Off Street Parking



High Ceilings

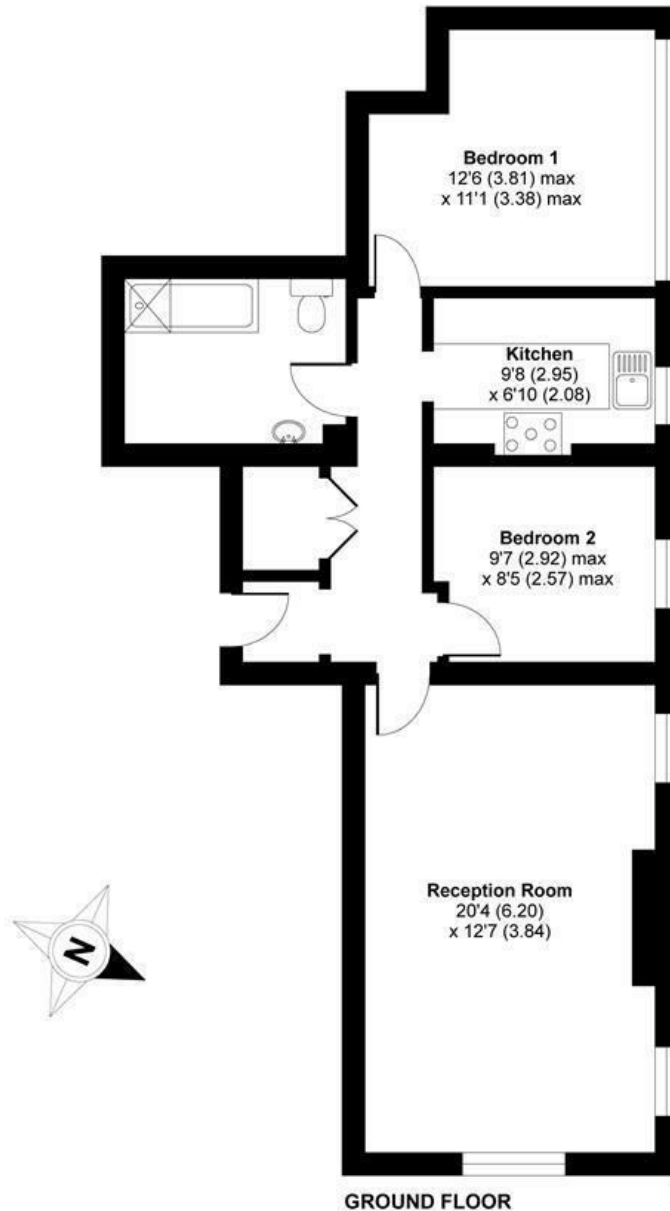


OPEN 7 DAYS A WEEK • Weekdays until 9pm • Weekends until 5pm

0208 876 6611

Upper Richmond Road West, London, SW14

APPROX. GROSS INTERNAL FLOOR AREA 729 SQ FT 67.7 SQ METRES



Whilst every attempt has been made to ensure the accuracy of the floor plan contained here, measurements of doors, windows and rooms are approximate and no responsibility is taken for any error, omission or misstatement. These plans are for representation purposes only as defined by RICS Code of Measuring Practice and should be used as such by any prospective purchaser. Specifically no guarantee is given on the total square footage of the property if quoted on this plan. Any figure given is for initial guidance only and should not be relied on as a basis of valuation.

Copyright nichecom.co.uk 2019 Produced for James Anderson REF : 422181

Energy Efficiency Rating		
	Current	Potential
Very energy efficient - lower running costs		
(92 plus) A		
(81-91) B		
(69-80) C		
(55-68) D		
(39-54) E		
(21-38) F		
(1-20) G		
Not energy efficient - higher running costs		
England & Wales	EU Directive 2002/91/EC	

Environmental Impact (CO ₂) Rating		
	Current	Potential
Very environmentally friendly - lower CO ₂ emissions		
(92 plus) A		
(81-91) B		
(69-80) C		
(55-68) D		
(39-54) E		
(21-38) F		
(1-20) G		
Not environmentally friendly - higher CO ₂ emissions		
England & Wales	EU Directive 2002/91/EC	

